



**Automatización Eléctrica**

Especialistas en Automatización

At the end of this document you will find links to products related to this catalog. You can go directly to our shop by clicking [HERE](#). [HERE](#)

# Variable transformer **ESS 102**



## Advantages

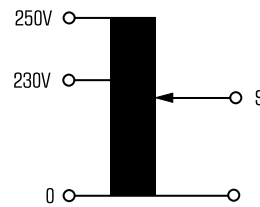
- Stepless adjustment of the AC voltage from zero to the maximum value
- Self-cleaning of the exposed contact tracks
- 4-point flange mounting
- Rotary knobs and scales optionally available

## Applications

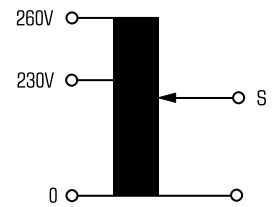
Variable auto transformer for continuous adjustment of AC voltages or currents under load.

## Sample application

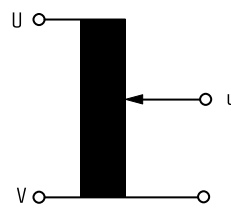
Serie 100



Serie 300



Serie 9000



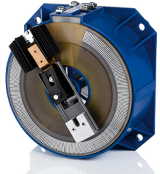
Picture shows ESS 120

## Standards



Variable transformer  
to: VDE 0552

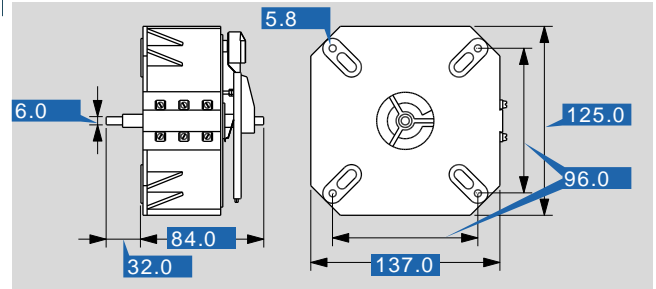
## Approvals



## Variable transformer ESS 102

Type		ESS 102
Electrical data	Input	
	Rated frequency	50 - 60 Hz
	Rated input voltage	230 Vac
	Output	
	Angle of rotation	320 °
	Rated output voltage	0...230/250 Vac
	Rated output current	2.00 A
	Environment	
	Ambient temperature max.	45 °C
	Safety and protection	
Class of Insulation System	B	
Protection index	IP 00	
Test voltage control spindle	4 kV	
Order numbers		
Order Number		<b>ESS 102</b>

Type		ESS 102
Mechanical data	Terminal and mounting	
	Fixing method	4-point bolted flange joint
	Terminals	Screw-type terminals
	Measures and weights	
	Weight	2.60 kg
	Accessory	
	Rotary knob (optional)	50/6-1
	Scale (optional)	SK/120



Subjects to change.



**Automatización Eléctrica**  
Especialistas en Automatización

Below is a list of articles with direct links to our shop Electric Automation Network where you can see:

- Quote per purchase volume in real time.
- Online documentation and datasheets of all products.
- Estimated delivery time enquiry in real time.
- Logistics systems for the shipment of materials almost anywhere in the world.
- Purchasing management, order record and tracking of shipments.

To access the product, [click on the green button](#).

Product	Code	Reference	Product link
Variable transformer PRI 230 Vac, SEC 0.8 - 20 A, 0...230/250 Vac - 0...230/260 Vac	ESS102	ESS 102	<a href="#">Buy on EAN</a>