



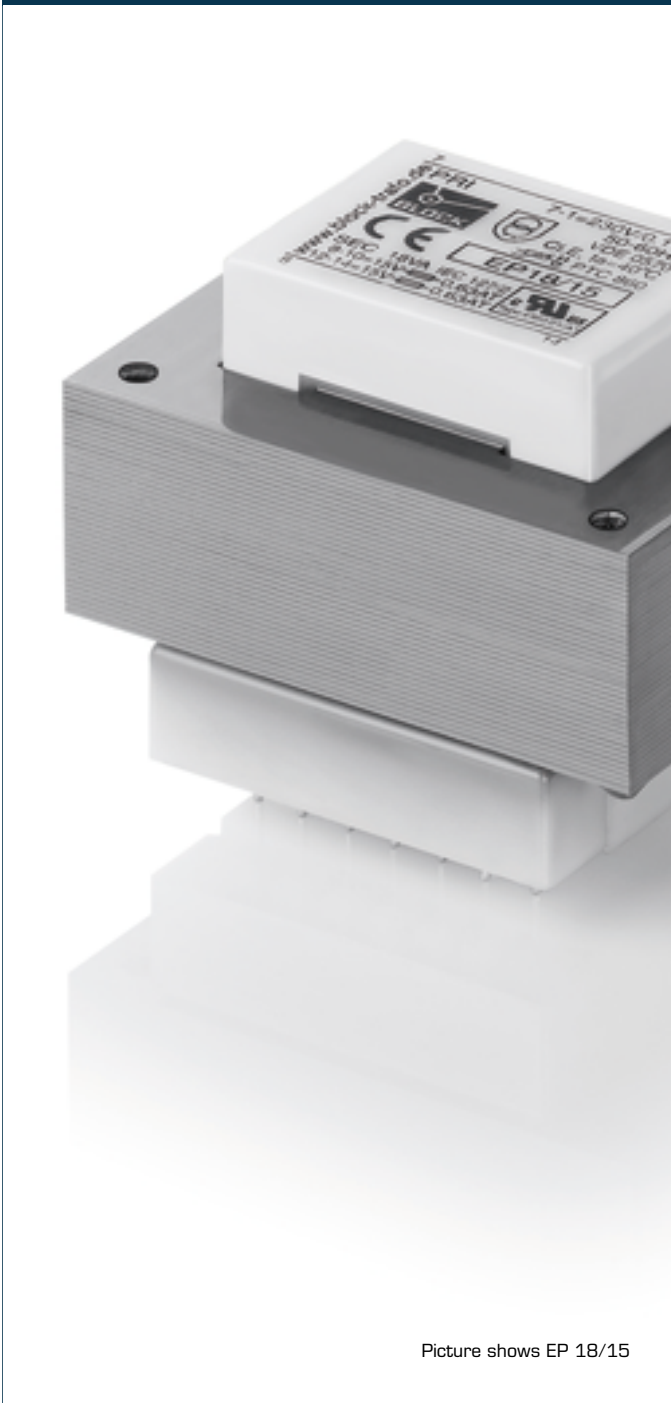
**Automatización Eléctrica**

Especialistas en Automatización

At the end of this document you will find links to products related to this catalog. You can go directly to our shop by clicking [HERE](#). [HERE](#)

# Safety isolating transformer

## EP 18/15



Picture shows EP 18/15

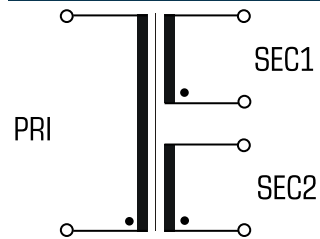
## Advantages

- Minimum size at high output
- Double output voltage for series or parallel connection
- Very good moisture protection and low noise thanks to BLOCKIMPEX vacuum impregnation
- Encapsulated safety coil bodies in 2-chamber technology
- Contact protected on the circuit board thanks to covered solder pin strips
- Stable connection technology with injected round wire soldering pins
- Additional mounting option with holes in the core

## Applications

Safety isolating transformer for the safe electrical isolation of the input and output sides. The transformer is suitable for creating SELV and PELV circuits because of the limit on the output voltage.

## Sample application



## Standards



Safety isolating transformer  
to: VDE 0570 Part 2-6, DIN EN 61558-2-6, EN 61558-2-6, IEC 61558-2-6

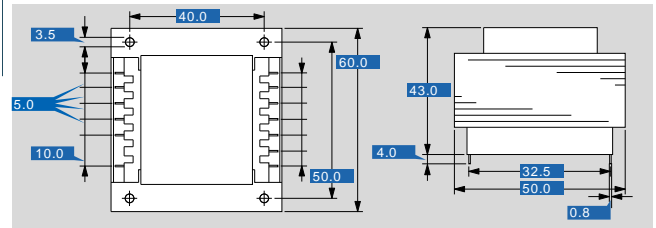
## Approvals



# Safety isolating transformer EP 18/15

Type		EP 18/15
Electrical data	Input	
	Rated input voltage	230 Vac
	Rated frequency	50 - 60 Hz
	Output	
	Rated output voltage	2 x 15 Vac
	Rated Power	18.0 VA
	No-load voltage (app. x factor)	1.18
	No-load loss (typ.)	2.70 W
	Efficiency	72 %
	Standards	
Classification	Safety isolating transformer	
Environment		
Ambient temperature max.	40 °C	
Safety and protection		
Type	Open type	
Class of Insulation System	E	
Protection index	IP 00	
Safety class (prepared)	II	
Short circuit strength	non-short-circuit proof	
Overload protection	Typ PTC 860 (Accessory - available on request)	
Order numbers		
<b>Order Number</b>	<b>EP 18/15</b>	

Type		EP 18/15
Mechanical data	Terminal and mounting	
	Fixing method	Holes in the core package
	Terminals	Pins for PCB
Measures and weights		
Core type	EI 60/21	
Weight	0.48 kg	



Subjects to change.



**Automatización Eléctrica**  
Especialistas en Automatización

Below is a list of articles with direct links to our shop Electric Automation Network where you can see:

- Quote per purchase volume in real time.
- Online documentation and datasheets of all products.
- Estimated delivery time enquiry in real time.
- Logistics systems for the shipment of materials almost anywhere in the world.
- Purchasing management, order record and tracking of shipments.

To access the product, [click on the green button.](#)

Product	Code	Reference	Product link
PCB transformer open type, PRI 230 Vac, SEC 2.5 - 35 VA, 2 x 6 - 2 x 8 Vac	EP1815	EP 18/15	<a href="#">Buy on EAN</a>