

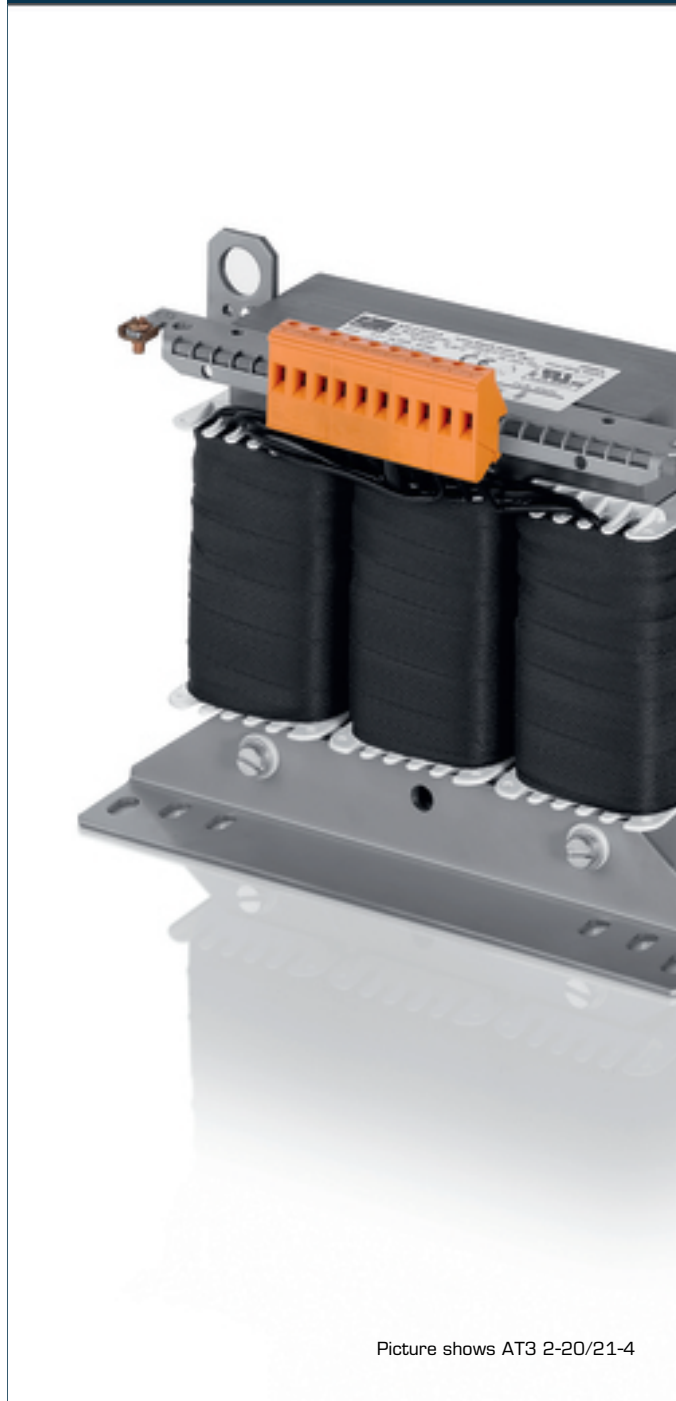


Automatización Eléctrica

Especialistas en Automatización

At the end of this document you will find links to products related to this catalog. You can go directly to our shop by clicking [HERE](#). [HERE](#)

Autotransformer AT3 3,5-44/46-4



Picture shows AT3 2-20/21-4

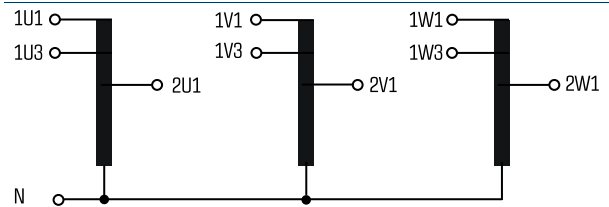
Advantages

| |
|---|
| Low weight and small size (compared to isolating transformers) |
| Very high efficiency |
| Inverse operation possible |
| Patented assembly technology to lower heat losses |
| Very good corrosion protection and low noise thanks to BLOCKIMPEX vacuum impregnation |
| Fixed, contact protected screw connection terminals complying with UVV BGV A3 |
| Multifunctional fixing rails with 12 oval slots |
| Enlarged fixing rail for easy installation from above |
| Integrated crane eyes |

Applications

Autotransformer for adjustment of the voltage on the input and output sides with no requirement for electrical isolation.

Sample application



Standards

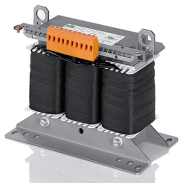


Autotransformer
to: VDE 0570 Teil 2-13, DIN EN 61558-2-13, EN 61558-2-13,
IEC 61558-2-13, UL 5085-1/-2, CSA 22.2 No.66

Approvals



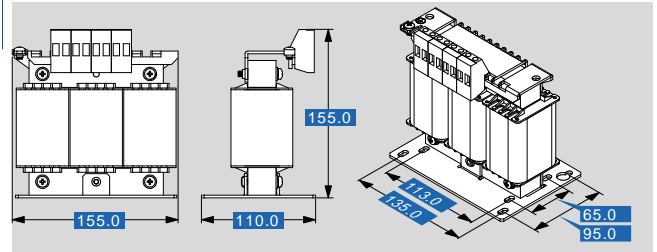
UL 5085-1/-2, CSA 22.2 No.66



Autotransformer AT3 3,5-44/46-4

| Type | | AT3 3,5-44/46-4 |
|----------------------------|-------------------------|-----------------|
| Electrical data | Input | |
| | Rated input voltage | 3 x 440/460 Vac |
| | Rated frequency | 50 - 60 Hz |
| | Output | |
| | Rated output voltage | 3 x 400 Vac |
| | Rated Power | 3500 VA |
| | Vector group | YNΔ0 |
| | Efficiency | 88 % |
| | Approvals | |
| | Approvals | cURus |
| Environment | | |
| Ambient temperature max. | 40 °C | |
| Safety and protection | | |
| Type | Open type | |
| Class of Insulation System | F | |
| Protection index | IP 00 | |
| Safety class (prepared) | I | |
| Short circuit strength | non-short-circuit proof | |
| Test voltage | 4000 Vac, 50 Hz | |
| Order numbers | | |
| Order Number | AT3 3,5-44/46-4 | |

| Type | | AT3 3,5-44/46-4 |
|-----------------|-----------------------|----------------------|
| Mechanical data | Terminal and mounting | |
| | Fixing method | Fixing rail |
| | Fixing screws | M5 |
| | Terminals | Screw-type terminals |
| | Measures and weights | |
| | Weight | 6.10 kg |
| | Core type | 3 UI 75/41,5 |



Subjects to change.



Automatización Eléctrica
Especialistas en Automatización

Below is a list of articles with direct links to our shop Electric Automation Network where you can see:

- Quote per purchase volume in real time.
- Online documentation and datasheets of all products.
- Estimated delivery time enquiry in real time.
- Logistics systems for the shipment of materials almost anywhere in the world.
- Purchasing management, order record and tracking of shipments.

To access the product, [click on the green button](#).

| Product | Code | Reference | Product link |
|--|------------|--------------------|----------------------------|
| Autotransformer PRI 3 x 200/208 - 3 x 690 Vac, SEC 2000 - 250000 VA, 3 x 400 Vac | AT33544464 | AT3 3,5-44/46-4 | Buy on EAN |