

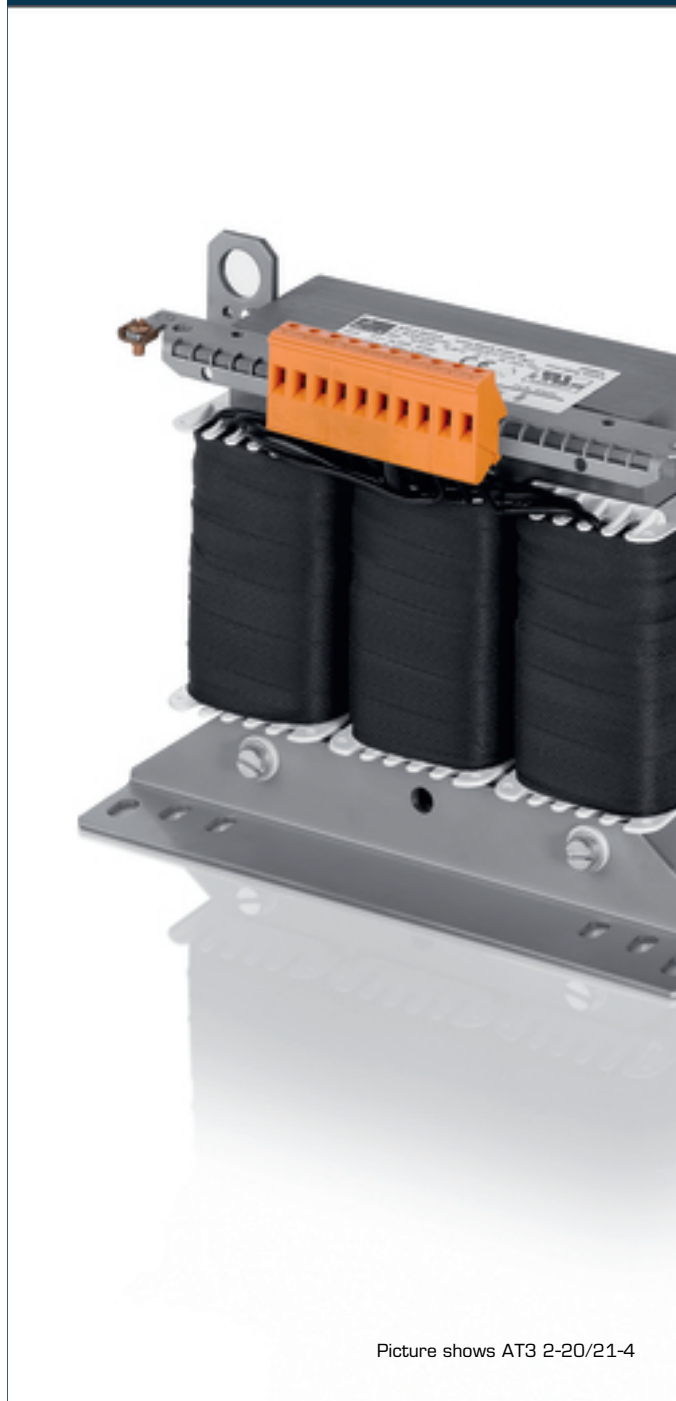


**Automatización Eléctrica**

Especialistas en Automatización

At the end of this document you will find links to products related to this catalog. You can go directly to our shop by clicking [HERE](#). [HERE](#)

# Autotransformer AT3 3,5-20/21-4



Picture shows AT3 2-20/21-4

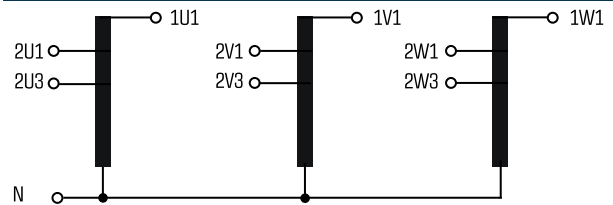
## Advantages

|   |
|---|
| Low weight and small size (compared to isolating transformers)                        |
| Very high efficiency  |
| Inverse operation possible  |
| Patented assembly technology to lower heat losses                                     |
| Very good corrosion protection and low noise thanks to BLOCKIMPEX vacuum impregnation |
| Fixed, contact protected screw connection terminals complying with UVV BGV A3         |
| Multifunctional fixing rails with 12 oval slots                                       |
| Enlarged fixing rail for easy installation from above                                 |
| Integrated crane eyes   |

## Applications

Autotransformer for adjustment of the voltage on the input and output sides with no requirement for electrical isolation.

## Sample application



## Standards

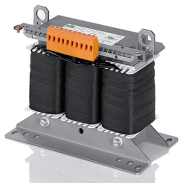


Autotransformer  
to: VDE 0570 Teil 2-13, DIN EN 61558-2-13, EN 61558-2-13,  
IEC 61558-2-13, UL 5085-1/-2, CSA 22.2 No.66

## Approvals



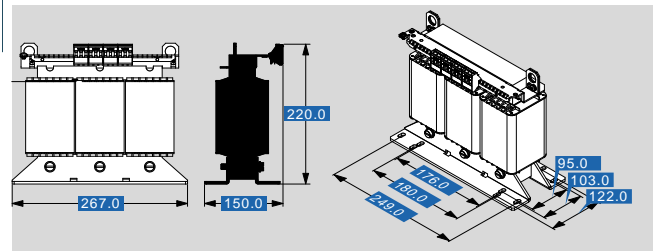
UL 5085-1/-2, CSA 22.2 No.66



# Autotransformer AT3 3,5-20/21-4

| Type                    |                            | AT3 3,5-20/21-4 |
|-------------------------|----------------------------|-----------------|
| Electrical data         | Input                      |                 |
|                         | Rated input voltage        | 3 x 200/208 Vac |
|                         | Rated frequency            | 50 - 60 Hz      |
|                         | Output                     |                 |
|                         | Rated output voltage       | 3 x 400 Vac     |
|                         | Rated Power                | 3500 VA         |
|                         | Vector group               | YNΔ0            |
|                         | Efficiency                 | 93 %            |
|                         | Approvals                  |                 |
|                         | Approvals                  | cURus           |
|                         | Environment                |                 |
|                         | Ambient temperature max.   | 40 °C           |
|                         | Safety and protection      |                 |
|                         | Type                       | Open type       |
|                         | Class of Insulation System | F               |
| Protection index        | IP 00                      |                 |
| Safety class (prepared) | I                          |                 |
| Short circuit strength  | non-short-circuit proof    |                 |
| Test voltage            | 4000 Vac, 50 Hz            |                 |
| Order numbers           |                            |                 |
| <b>Order Number</b>     | <b>AT3 3,5-20/21-4</b>     |                 |

| Type            |                       | AT3 3,5-20/21-4      |
|-----------------|-----------------------|----------------------|
| Mechanical data | Terminal and mounting |                      |
|                 | Fixing method         | Fixing rail          |
|                 | Fixing screws         | M6                   |
|                 | Terminals             | Screw-type terminals |
|                 | Measures and weights  |                      |
|                 | Weight                | 20.00 kg             |
|                 | Core type             | 3 UI 114/64          |





**Automatización Eléctrica**  
Especialistas en Automatización

Below is a list of articles with direct links to our shop Electric Automation Network where you can see:

- Quote per purchase volume in real time.
- Online documentation and datasheets of all products.
- Estimated delivery time enquiry in real time.
- Logistics systems for the shipment of materials almost anywhere in the world.
- Purchasing management, order record and tracking of shipments.

To access the product, [click on the green button](#).

| Product  | Code       | Reference          | Product link               |
|--|------------|--------------------|----------------------------|
| Autotransformer PRI 3 x 200/208 - 3 x 690 Vac, SEC 2000 - 250000 VA, 3 x 400 Vac | AT33520214 | AT3<br>3,5-20/21-4 | <a href="#">Buy on EAN</a> |