

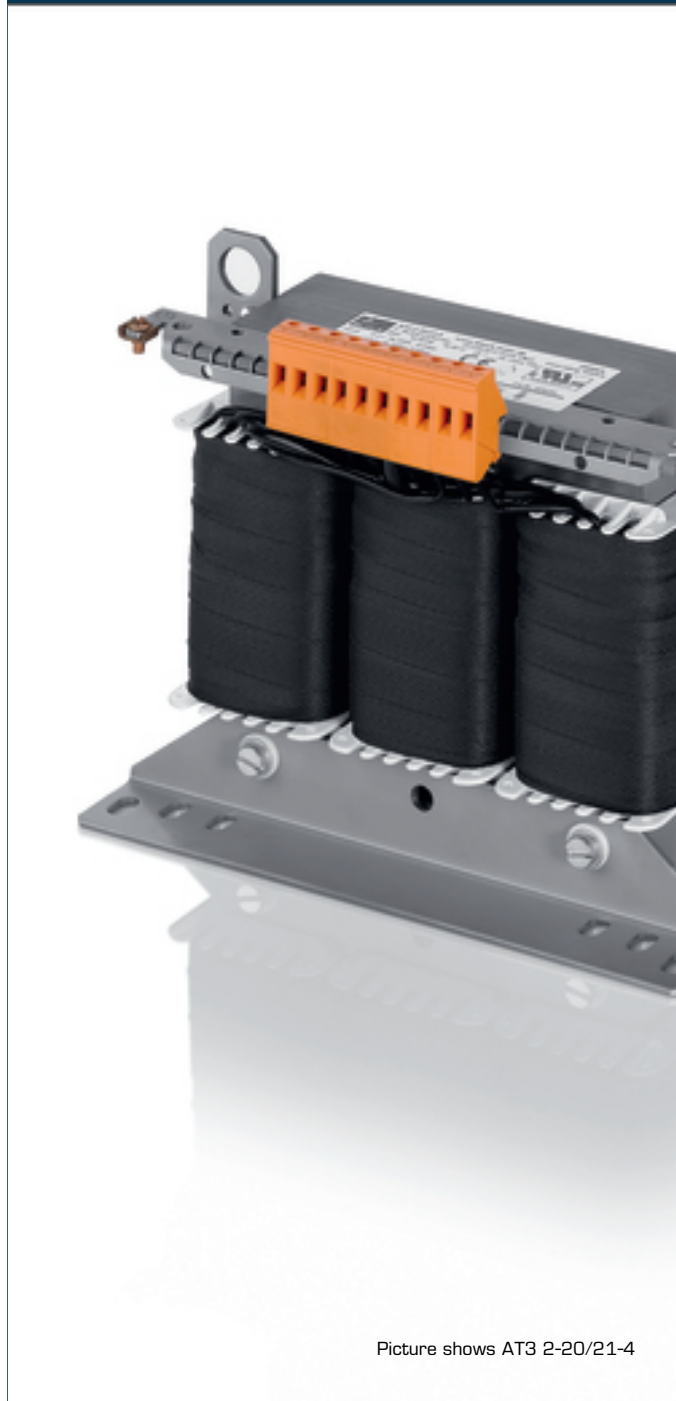


**Automatización Eléctrica**

Especialistas en Automatización

At the end of this document you will find links to products related to this catalog. You can go directly to our shop by clicking [HERE](#). [HERE](#)

# Autotransformer AT3 160-48/50-4



Picture shows AT3 2-20/21-4

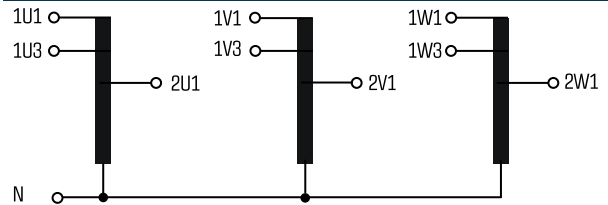
## Advantages

|   |
|---|
| Low weight and small size (compared to isolating transformers)                        |
| Very high efficiency  |
| Inverse operation possible  |
| Patented assembly technology to lower heat losses                                     |
| Very good corrosion protection and low noise thanks to BLOCKIMPEX vacuum impregnation |
| Fixed, contact protected screw connection terminals complying with UVV BGV A3         |
| Multifunctional fixing rails with 12 oval slots                                       |
| Enlarged fixing rail for easy installation from above                                 |
| Integrated crane eyes   |

## Applications

Autotransformer for adjustment of the voltage on the input and output sides with no requirement for electrical isolation.

## Sample application



## Standards

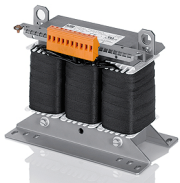


Autotransformer  
to: VDE 0570 Teil 2-13, DIN EN 61558-2-13, EN 61558-2-13,  
IEC 61558-2-13, UL 5085-1/-2, CSA 22.2 No.66

## Approvals



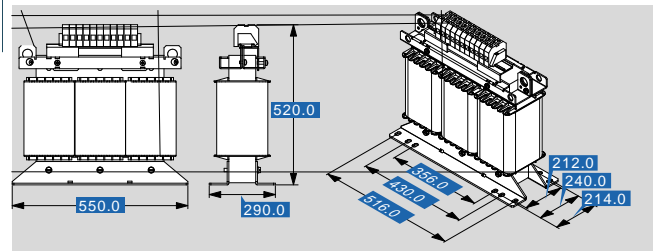
UL 5085-1/-2, CSA 22.2 No.66



# Autotransformer AT3 160-48/50-4

| Type                       |                         | AT3 160-48/50-4 |
|----------------------------|-------------------------|-----------------|
| Electrical data            | Input                   |                 |
|                            | Rated input voltage     | 3 x 480/500 Vac |
|                            | Rated frequency         | 50 - 60 Hz      |
|                            | Output                  |                 |
|                            | Rated output voltage    | 3 x 400 Vac     |
|                            | Rated Power             | 160000 VA       |
|                            | Vector group            | YNΔ0            |
|                            | Efficiency              | 97 %            |
|                            | Approvals               |                 |
|                            | Approvals               | cURus           |
| Environment                |                         |                 |
| Ambient temperature max.   | 40 °C                   |                 |
| Safety and protection      |                         |                 |
| Type                       | Open type               |                 |
| Class of Insulation System | F                       |                 |
| Protection index           | IP 00                   |                 |
| Safety class (prepared)    | I                       |                 |
| Short circuit strength     | non-short-circuit proof |                 |
| Test voltage               | 4000 Vac, 50 Hz         |                 |
| Order numbers              |                         |                 |
| <b>Order Number</b>        | <b>AT3 160-48/50-4</b>  |                 |

| Type            |                       | AT3 160-48/50-4      |
|-----------------|-----------------------|----------------------|
| Mechanical data | Terminal and mounting |                      |
|                 | Fixing method         | Fixing rail          |
|                 | Fixing screws         | M12                  |
|                 | Terminals             | Screw-type terminals |
|                 | Measures and weights  |                      |
|                 | Weight                | 213.00 kg            |
|                 | Core type             | 3 UI 240/140         |



Subjects to change.

Below is a list of articles with direct links to our shop Electric Automation Network where you can see:

- Quote per purchase volume in real time.
- Online documentation and datasheets of all products.
- Estimated delivery time enquiry in real time.
- Logistics systems for the shipment of materials almost anywhere in the world.
- Purchasing management, order record and tracking of shipments.

To access the product, [click on the green button.](#)

| <b>Product</b>  | <b>Code</b> | <b>Reference</b>   | <b>Product link</b>        |
|---|-------------|--------------------|----------------------------|
| Autotransformer PRI 3 x 200/208 - 3 x 690 Vac,<br>SEC 2000 - 250000 VA, 3 x 400 Vac | AT316048504 | AT3<br>160-48/50-4 | <a href="#">Buy on EAN</a> |