

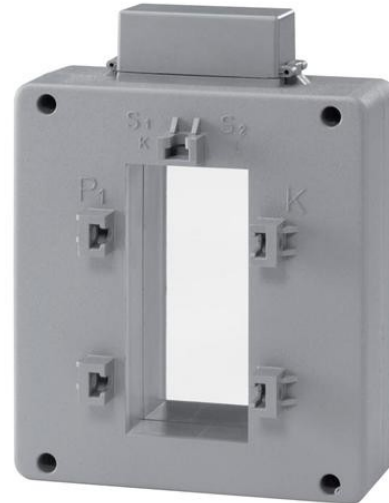


Electric Automation
Automation specialists

Reference: CT8/1500
Code: 2CSG521220R1101

CT8/1500 Current transformer

Buy it at Electric Automation Network



CT8/1500 is used to transform primary currents to $\approx 5A$ secondary currents for c.a. measurement instruments

Ordering

EAN:	8012542607304
Minimum Order Quantity:	1 piece
Customs Tariff Number:	85043121

Dimensions

Product Net Width:	0.090 m
Product Net Height:	0.135 m
Product Net Depth:	0.145 m
Product Net Weight:	0.860 kg

Container Information

Package Level 1 Units:	1 piece
Package Level 1 Width:	0.142 m
Package Level 1 Height:	0.063 m
Package Level 1 Length:	0.125 m
Package Level 1 Gross Weight:	1 kg

Package Level 1 EAN:	8012542607304
Package Level 2 Units:	1 piece
Package Level 2 Gross Weight:	0.500 kg

Technical

Mounting Type:	Through primary
Cable Use:	Cable and Horizontal bar
Cable Cross-Section:	2 x 30 mm
Rated Cross-Section:	80 x 30 mm
Rated Primary Current (I_{pn}):	1500 A

Environmental

RoHS Status:	Following EU Directive 2002/95/EC August 18, 2005 and amendment
--------------	---

Certificates and Declarations (Document Number)

Declaration of Conformity - CE:	ITSCE115CT
RoHS Information:	2CSC445004K0201

Classifications

Object Classification Code:	T
ETIM 4:	EC002048 - Current transformer
ETIM 5:	EC002048 - Current transformer