

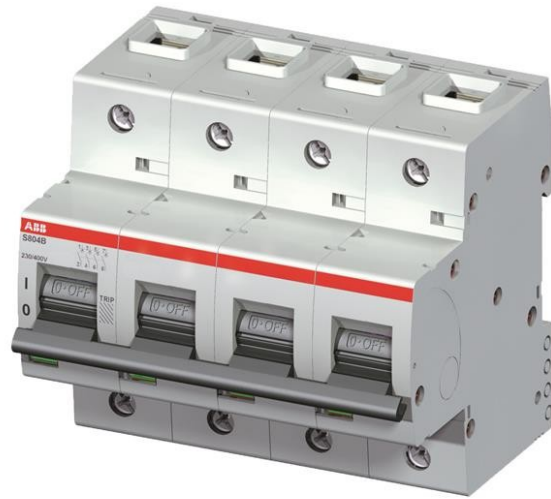


Electric Automation
Automation specialists

Reference: S804B-D100
Code: 2CCS814001R0821

S804B-D100 High Performance Circuit Breaker

Buy it at Electric Automation Network



The S804B-D100 is a 4-pole High Performance Circuit breaker with D-Characteristic, with cage terminal and a rated current of 100 A. It is a current limiting device with a maximum breaking capacity of 16kA at 230/400V. It can be used for voltages up to 230/400V. It has two different tripping mechanisms, the thermal tripping mechanism for overload protection and the electromechanic tripping mechanism for short circuit protection. The S804B-D100 complies with IEC/EN 60947-2 and EN 60898-1 and allows the use for residential, commercial and industrial applications. It has numerous of approvals, therefore it can be used worldwide. The extensive range of accessory makes the use of S804B-D100 more comfortable. Due to the fast arc extinction of S804B-D100 your application will be secured.

Ordering

EAN:	7612271416171
Minimum Order Quantity:	1 piece
Customs Tariff Number:	85362020

Dimensions

Product Net Width:	106 mm
Product Net Depth:	82.5 mm
Product Net Height:	95 mm
Product Net Weight:	0.98 kg

Container Information

Package Level 1 Units:	1 piece
Package Level 1 Width:	105 mm
Package Level 1 Length:	111 mm
Package Level 1 Height:	99 mm
Package Level 1 Gross Weight:	1.01 kg
Package Level 1 EAN:	7612271416171
Package Level 2 Units:	1 piece
Package Level 2 Height:	0.92 mm
Package Level 2 Gross Weight:	1.1 kg

Environmental

Ambient Air Temperature:	Operation -25 ... +60 °C Storage -40 ... +70 °C
RoHS Status:	Following EU Directive 2002/95/EC August 18, 2005 and amendment

Technical

Standards:	IEC/EN 60947-2 IEC/EN 60898-1
Number of Poles:	4
Tripping Characteristic:	D
Rated Current (I_n):	100 A
Rated Operational Voltage:	230/400 V AC 75 V DC
Power Loss:	at Rated Operating Conditions per Pole 8 W
Rated Insulation Voltage (U_i):	440 V AC
Rated Frequency (f):	50 / 60 Hz
Rated Short-Circuit Capacity (I_{cn}):	10 kA
Rated Ultimate Short-Circuit Breaking Capacity (I_{cu}):	(230 / 400 V AC) 16 kA
Rated Service Short-Circuit Breaking Capacity (I_{cs}):	(230 / 400 V AC) 10 kA
Oversvoltage Category:	III
Pollution Degree:	3
Rated Impulse Withstand Voltage (U_{imp}):	4 kV
Housing Material:	Insulation group I, RAL 7035
Contact Position Indication:	ON / OFF / TRIP
Degree of Protection:	acc. to IEC 60529 IP20
Remarks:	Connection from top and bottom Connecting with CU only IP40 in enclosure with cover Cage terminal with captIIIe screw
Terminal Type:	Screw Terminals

Connecting Capacity:	Flexible 1 ... 50 mm ² Flexible Stranded 1 ...70 mm ²
Tightening Torque:	3.5 N·m
Recommended Screw Driver:	Pozidriv 2
Mounting on DIN Rail:	TH35-15 (35 x 15 mm Mounting Rail) acc. to IEC 60715 TH35-7.5 (35 x 7.5 mm Mounting Rail) acc. to IEC 60715
Mounting Position:	Any

Certificates and Declarations (Document Number)

Declaration of Conformity - CE:	2CCC413016D060
RoHS Information:	2CCC413008D0204

Classifications

ETIM 4:	EC000042 - Miniature circuit breaker (MCB)
ETIM 5:	EC000042 - Miniature circuit breaker (MCB)
Object Classification Code:	F