

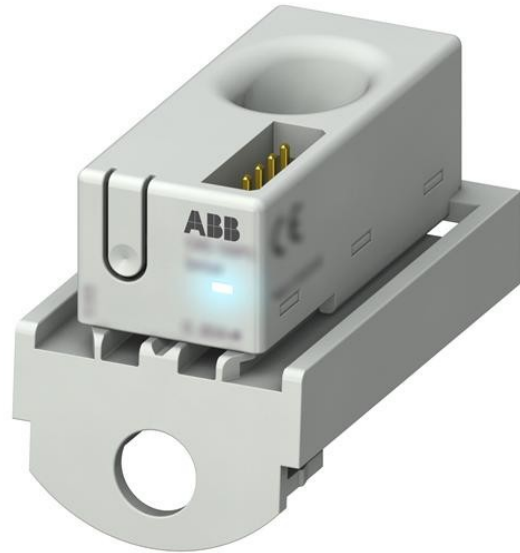


**Electric Automation**  
Automation specialists

Reference: CMS-101S8  
Code: 2CCA880125R0001

Sensor 18mm, 40A AC, DC, TRMS,  
mounting for S800

Buy it at [Electric Automation Network](#)



This component is part of the CMS (Circuit Monitoring Systems) family. CMS components are made to measure the final circuits (branches) of installations. Each monitoring system consists of a Control Unit and sensors with different measurement ranges and mounting possibilities. The CMS sensors are among the most compact and highest-performing current sensors on the market.

### Ordering

EAN:	7612271426569
Minimum Order Quantity:	1 piece
Customs Tariff Number:	90303900

### Dimensions

Product Net Width:	26.5 mm
Product Net Height:	31.8 mm
Product Net Length:	45.5 mm
Product Net Depth:	45.5 mm
Product Net Weight:	0.014 kg

### Container Information

Package Level 1 Units:	1 piece
------------------------	---------

Package Level 1 Width:	130 mm
Package Level 1 Height:	75 mm
Package Level 1 Length:	230 mm
Package Level 1 Gross Weight:	0.083 kg
Package Level 1 EAN:	7612271426569

## Environmental

RoHS Status:	Following EU Directive 2002/95/EC August 18, 2005 and amendment
--------------	---

## Additional Information

Mounting Type:	Sensors 18 mm for S800 installation devices with cage terminals
Product Main Type:	CMS
Product Name:	Sensor
Rated Operational Voltage:	690 V AC 1500 V DC

## Certificates and Declarations (Document Number)

Data Sheet, Technical Information:	2CCC481002C0201
Declaration of Conformity - CE:	2CCC481005D0201
RoHS Information:	2CCC441009D0202

## Classifications

ETIM 4:	EC002498 - Accessories for low-voltage switch technology
ETIM 5:	EC002498 - Accessories for low-voltage switch technology
Object Classification Code:	P