

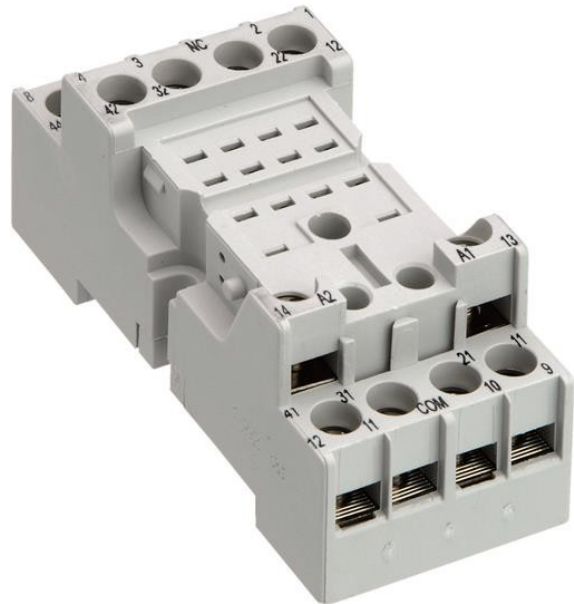


**Electric Automation**  
Automation specialists

Reference: CR-M2SS  
Code: 1SVR405651R1000

CR-M2SS Standard socket for 2c/o CR-M relay

Buy it at [Electric Automation Network](#)



The CR-M2SS socket is from the CR-M (miniature) relay range. The standard socket is suitable for CR-M relays with 2 c/o (SPDT) output contacts. The socket has screw connection terminals. Pluggable function modules, holder and marker are available as accessories.

## Ordering

EAN:	4013614373787
Minimum Order Quantity:	10 piece
Customs Tariff Number:	85389099

## Dimensions

Product Net Width:	27 mm
Product Net Height:	42.5 mm
Product Net Depth:	82 mm
Product Net Weight:	0.066 kg

## Container Information

Package Level 1 Units:	10 piece
Package Level 1 Width:	141 mm
Package Level 1 Height:	95 mm

Package Level 1 Length:	78 mm
Package Level 1 Gross Weight:	0.662 kg

## Technical

Function:	Accessory for interface relays CR-M
Sub-Function:	Socket for miniature relays
Sub-Function 2:	Standard socket for miniature relay 2 c/o
Output:	none
Output Signal:	none
Terminal Type:	Screw Terminals

## Environmental

RoHS Status:	Following EU Directive 2002/95/EC August 18, 2005 and amendment
--------------	---

## Certificates and Declarations (Document Number)

CSA Certificate:	CSA_262671-2785566
cUR Certificate:	cUR_E244328
Declaration of Conformity - CE:	1SAD938501-0159
EAC Certificate:	EAC_RU_C-PL.ME77.B.01873
GOST Certificate:	GOST_POCC_DE.AB76.D02256
RMRS Certificate:	RMRS_12.04008.250
RoHS Information:	1SAA981041-4402
UR Certificate:	UR_E244328

## Classifications

Object Classification Code:	K
E-nummer:	4005370
ETIM 4:	EC001456 - Relay socket
ETIM 5:	EC001456 - Relay socket
UNSPSC:	39120000
eClass:	7.0 27371603