

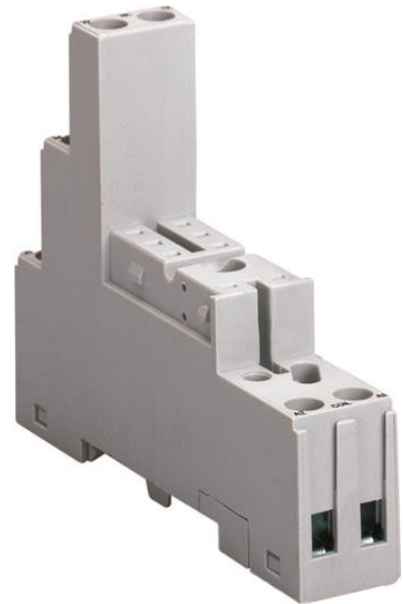


Electric Automation
Automation specialists

Reference: CR-PLSx
Code: 1SVR405650R0100

CR-PLSX Logical socket for 1c/o or 2c/o
CR-P relays

Buy it at [Electric Automation Network](#)



The CR-PLSx socket is from the CR-P (pcb) relay range. The logical socket is suitable for CR-P relays with 1 or 2 c/o (SPDT) output contacts. The socket has screw connection terminals. Pluggable function modules, holder and marker are available as accessories.

Ordering

EAN:	4013614373091
Minimum Order Quantity:	10 piece
Customs Tariff Number:	85389099

Dimensions

Product Net Width:	15.5 mm
Product Net Height:	61 mm
Product Net Depth:	78.5 mm
Product Net Weight:	0.043 kg

Container Information

Package Level 1 Units:	10 piece
Package Level 1 Width:	159 mm
Package Level 1 Height:	64 mm

Package Level 1 Length:	80 mm
Package Level 1 Gross Weight:	0.432 kg

Technical

Function:	Accessory for interface relays CR-P
Sub-Function:	Socket for pcb relays
Sub-Function 2:	Logical socket for pcb relay 1 c/o or 2 c/o
Output:	none
Output Signal:	none
Terminal Type:	Screw Terminals

Environmental

RoHS Status:	Following EU Directive 2002/95/EC August 18, 2005 and amendment
--------------	---

Certificates and Declarations (Document Number)

CSA Certificate:	CSA_262671-2785566
Declaration of Conformity - CE:	1SAD938501-0159
EAC Certificate:	EAC_RU_C-PL.ME77.B.01873
GOST Certificate:	GOST_POCC_DE.AB76.D02256
RMRS Certificate:	RMRS_12.04008.250
RoHS Information:	1SAA981041-4402
UR Certificate:	UR_E244328

Classifications

Object Classification Code:	K
E-nummer:	4005316
ETIM 4:	EC001456 - Relay socket
ETIM 5:	EC001456 - Relay socket
UNSPSC:	39120000
eClass:	7.0 27371603