

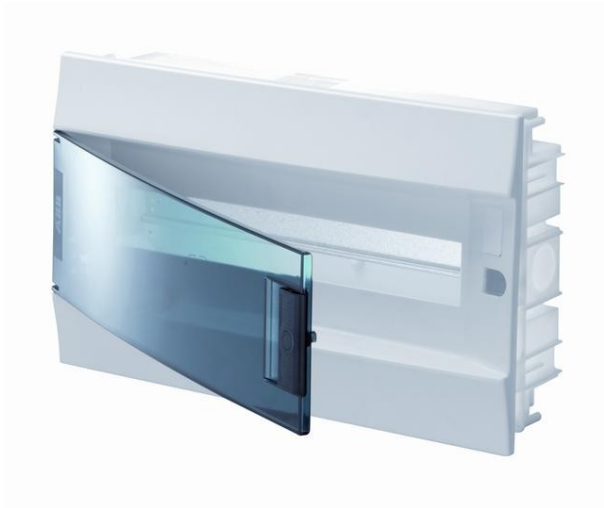


Electric Automation
Automation specialists

Reference: 41C18x12
Code: 1SLM004100A1404

MISTRAL41F flush 850 transparent door
18M

[Buy it at Electric Automation Network](#)



MISTRAL41F flush 850 transparent door 18M

Ordering

| | |
|------------------------|---------------|
| EAN: | 8000126114010 |
| Customs Tariff Number: | 85381000 |

Dimensions

| | |
|---------------------|---------|
| Product Net Width: | 0.430 m |
| Product Net Height: | 0.25 m |
| Product Net Depth: | 0.108 m |
| Product Net Weight: | 1.1 kg |

Container Information

| | |
|-------------------------------|---------------|
| Package Level 1 Units: | 6 piece |
| Package Level 1 Width: | 0.4 m |
| Package Level 1 Height: | 0.525 m |
| Package Level 1 Length: | 0.6 m |
| Package Level 1 Gross Weight: | 6.6 kg |
| Package Level 1 EAN: | 8000126114027 |

Environmental

| | |
|--------------|--|
| RoHS Status: | Planned to follow EU Directive 2002/95/EC August 18, 2005 and amendment after 2006-01-01 |
|--------------|--|

Additional Information

| | |
|-----------------------|----------------|
| Color: | RAL 9016 |
| Degree of Protection: | IP41 |
| DIN Place Units: | 18 |
| Enclosure Material: | thermoplastic |
| Glow Wire Test: | 850 |
| Mounting Type: | Hollow wall |
| Number of Rows: | 1 |
| Power Loss: | 27 W |
| Product Main Type: | MISTRAL41F |
| Product Name: | Consumer units |
| Protection Class: | Isolated |

Certificates and Declarations (Document Number)

| | |
|------------------------------------|-----------------|
| Data Sheet, Technical Information: | 1SLC801013D0201 |
| Declaration of Conformity - CE: | 1SLT100096D0200 |
| RoHS Information: | 1SLT00003R2E0 |

Classifications

| | |
|-----------------------------|-------------------------------------|
| ETIM 4: | EC000214 - Small distribution board |
| ETIM 5: | EC000214 - Small distribution board |
| Object Classification Code: | U |