

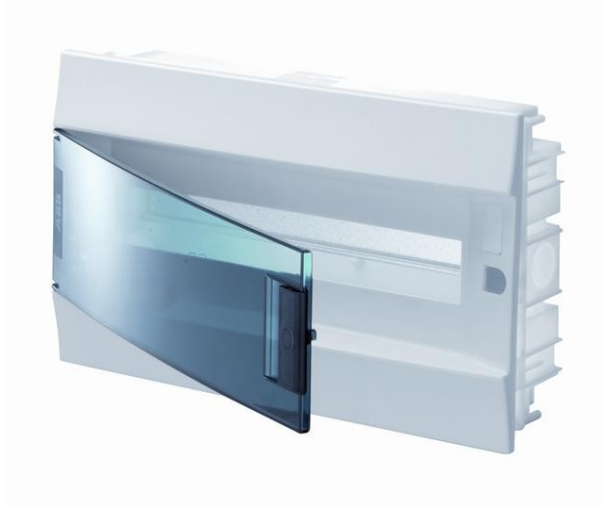


Electric Automation
Automation specialists

Reference: 41A18x12
Code: 1SLM004100A1204

MISTRAL41F flush transparent door 18M

Buy it at Electric Automation Network



MISTRAL41F flush transparent door 18M

Ordering

EAN:	8000126112436
Customs Tariff Number:	85381000

Dimensions

Product Net Width:	0.430 m
Product Net Height:	0.25 m
Product Net Depth:	0.108 m
Product Net Weight:	1.1 kg

Container Information

Package Level 1 Units:	6 piece
Package Level 1 Width:	0.4 m
Package Level 1 Height:	0.525 m
Package Level 1 Length:	0.6 m
Package Level 1 Gross Weight:	6.6 kg
Package Level 1 EAN:	8000126113907

Environmental

RoHS Status:	Planned to follow EU Directive 2002/95/EC August 18, 2005 and amendment after 2006-01-01
--------------	------------------------------------------------------------------------------------------

Additional Information

Color:	RAL 9016
Degree of Protection:	IP41
DIN Place Units:	18
Enclosure Material:	thermoplastic
Glow Wire Test:	650
Mounting Type:	Flush-mounting
Number of Rows:	1
Power Loss:	27 W
Product Main Type:	MISTRAL41F
Product Name:	Consumer units
Protection Class:	Isolated

Certificates and Declarations (Document Number)

Data Sheet, Technical Information:	1SLC801013D0201
Declaration of Conformity - CE:	1SLT100096D0200
RoHS Information:	1SLT00003R2E0

Classifications

ETIM 4:	EC000214 - Small distribution board
ETIM 5:	EC000214 - Small distribution board
Object Classification Code:	U