

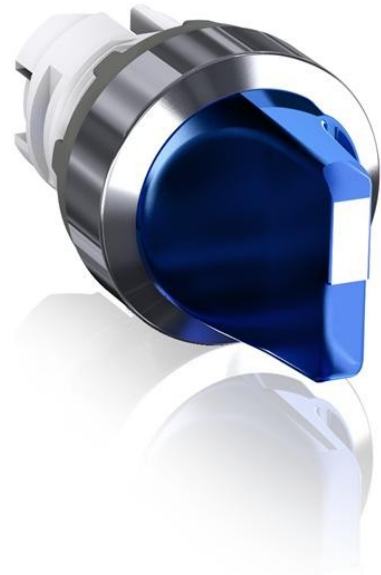


**Electric Automation**  
Automation specialists

Reference: M2SS3-21L  
Code: 1SFA611202R2104

M2SS3-21L Selector Switch

Buy it at [Electric Automation Network](#)



Modular Selector Switch - 2-Pos Momentary, spring return from C to B - Short handle - Blue - Illuminated - Chrome plastic - No contact block

### Ordering

EAN:	7320500286791
Minimum Order Quantity:	10 piece
Customs Tariff Number:	85369001

### Dimensions

Product Net Width:	0.048 m
Product Net Height:	0.030 m
Product Net Depth:	0.050 m
Product Net Weight:	0.019 kg

### Container Information

Package Level 1 Units:	1 piece
Package Level 1 Width:	0.11 m
Package Level 1 Height:	0.03 m
Package Level 1 Length:	0.15 m
Package Level 1 Gross Weight:	0.019 kg

## Environmental

Ambient Air Temperature:	Operation -25 ... +70 °C Storage -30 ... +85 °C
RoHS Status:	Following EU Directive 2002/95/EC August 18, 2005 and amendment

## Additional Information

Actuator Type:	Short handle
Bezel Material:	Chrome plastic
Block:	No contact block
Color:	Blue
Function:	Momentary
IIT Publishing Status:	Level 0 - Information enabled
Illumination:	Illuminated
Mechanical Durability:	0.5 million
Product Main Type:	M2SS3
Product Name:	Selector Switch
Product Range:	Modular
Product Type:	M2SS
RoHS Date:	0635 4
Spring Return From:	C to B
Sub-Function:	2-position

## Certificates and Declarations (Document Number)

Data Sheet, Technical Information:	1SFC151003C0201
Declaration of Conformity - CE:	1SFA1-83
RoHS Information:	1SFC151011D0203

## Classifications

ETIM 4:	EC002024 - Accessories for control circuit devices
ETIM 5:	EC002024 - Accessories for control circuit devices
Object Classification Code:	S
UNSPSC:	39121500