

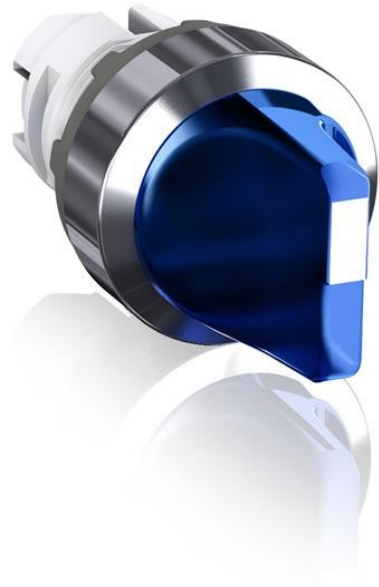


Electric Automation
Automation specialists

Reference: M2SS1-31L
Code: 1SFA611200R3104

M2SS1-31L Selector Switch

Buy it at [Electric Automation Network](#)



Modular Selector Switch - 2-Pos Maintained - Short handle - Blue - Illuminated - Chrome metal - No contact block

Ordering

| | |
|-------------------------|---------------|
| EAN: | 7320500283516 |
| Minimum Order Quantity: | 10 piece |
| Customs Tariff Number: | 85369001 |

Dimensions

| | |
|---------------------|----------|
| Product Net Width: | 0.030 m |
| Product Net Height: | 0.030 m |
| Product Net Depth: | 0.050 m |
| Product Net Weight: | 0.027 kg |

Container Information

| | |
|-------------------------------|----------|
| Package Level 1 Units: | 1 piece |
| Package Level 1 Width: | 0.11 m |
| Package Level 1 Height: | 0.03 m |
| Package Level 1 Length: | 0.15 m |
| Package Level 1 Gross Weight: | 0.027 kg |

Environmental

| | |
|--------------------------|---|
| Ambient Air Temperature: | Operation -25 ... +70 °C Storage -30 ... +85 °C |
| RoHS Status: | Following EU Directive 2002/95/EC August 18, 2005 and amendment |

Additional Information

| | |
|------------------------|-------------------------------|
| Actuator Type: | Short handle |
| Bezel Material: | Chrome metal |
| Block: | No contact block |
| Color: | Blue |
| Function: | Maintained |
| IIT Publishing Status: | Level 0 - Information enabled |
| Illumination: | Illuminated |
| Maintained Positions: | B, C |
| Mechanical Durability: | 0.5 million |
| Product Main Type: | M2SS1 |
| Product Name: | Selector Switch |
| Product Range: | Modular |
| Product Type: | M2SS |
| RoHS Date: | 0635 4 |
| Sub-Function: | 2-position |

Certificates and Declarations (Document Number)

| | |
|------------------------------------|-----------------|
| Data Sheet, Technical Information: | 1SFC151003C0201 |
| Declaration of Conformity - CE: | 1SFA1-83 |
| RoHS Information: | 1SFC151011D0203 |

Classifications

| | |
|-----------------------------|--|
| E-nummer: | 3715904 |
| ETIM 4: | EC002024 - Accessories for control circuit devices |
| ETIM 5: | EC002024 - Accessories for control circuit devices |
| Object Classification Code: | S |
| UNSPSC: | 39121500 |