

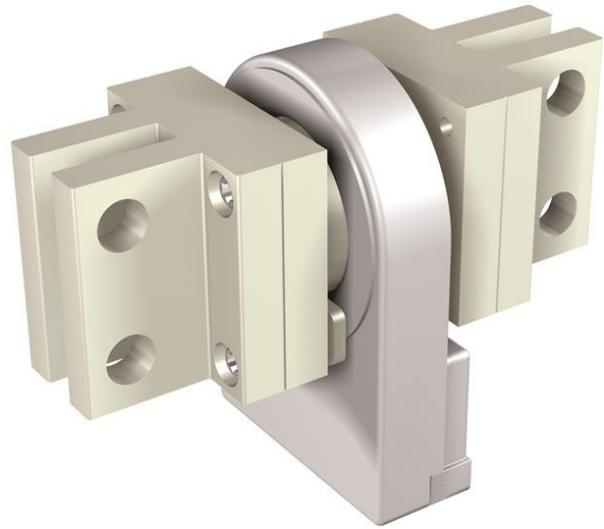


Electric Automation
Automation specialists

Reference: Acc. E1.2
Code: 1SDA073736R1

EXT CS N E1.2 - E2.2 2000A

Buy it at [Electric Automation Network](#)



CURRENT SENSOR FOR EXTERNAL NEUTRAL E1.2 - E2.2 2000A

Ordering

EAN:	8015644776695
Minimum Order Quantity:	1 piece
Customs Tariff Number:	85389099

Container Information

Package Level 1 EAN:	8015644776695
----------------------	---------------

Additional Information

Product Main Type:	Accessories for Emax 2
Product Name:	Accessory
Product Type:	ACC
Standards:	IEC
Suitable For:	E1.2 E2.2
Suitable for Product Class:	SACE Emax 2

Certificates and Declarations (Document Number)

Data Sheet, Technical Information:	1SDC200023D0204
------------------------------------	-----------------

Declaration of Conformity - CE:

1SDL000165R0019
1SDL000165R0020

Classifications

Object Classification Code:

Q