

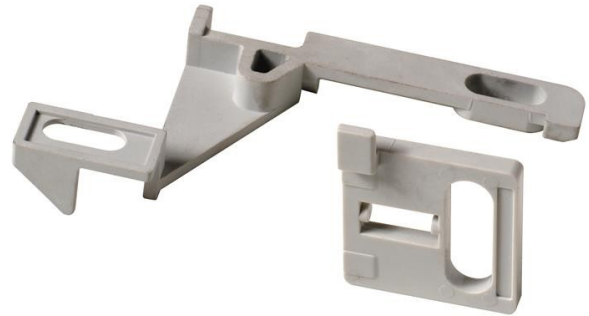


**Electric Automation**  
Automation specialists

Reference: X1  
Code: 1SDA062148R1

KLC X1 KEY LOCK KIRK OP.(PREDIS)

[Buy it at Electric Automation Network](#)



KEY LOCK KIRK IN OPEN (PREDISPOSITION ONLY) X1

### Ordering

EAN:	8015644646875
Minimum Order Quantity:	1 piece
Customs Tariff Number:	85389099

### Container Information

Package Level 1 Units:	1 piece
Package Level 1 Gross Weight:	0.1 kg
Package Level 1 EAN:	8015644646875

### Additional Information

Product Main Type:	Accessories for Emax
Product Name:	Accessory
Product Type:	ACC
Standards:	IEC
Suitable For:	X1
Suitable for Product Class:	SACE Emax

### Certificates and Declarations (Document Number)

Data Sheet, Technical Information:	1SDC200009D0203
Declaration of Conformity - CE:	1SDL000165R0018

### Classifications

Object Classification Code:	Q
UNSPSC:	39120000