

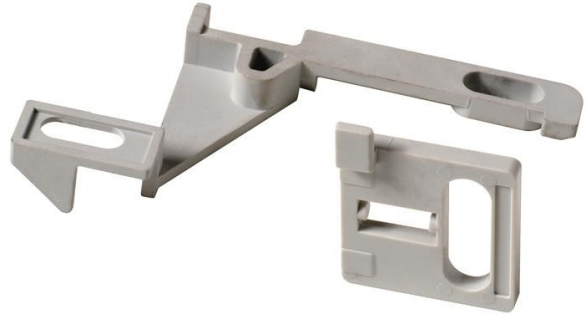


Electric Automation
Automation specialists

Reference: X1
Code: 1SDA062147R1

KLC X1 KEY LOCK CASTELL OP.(PREDIS)

[Buy it at Electric Automation Network](#)



KEY LOCK CASTELL IN OPEN (PREDISPOSITION ONLY) X1

Ordering

EAN:	8015644646868
Minimum Order Quantity:	1 piece
Customs Tariff Number:	85389099

Container Information

Package Level 1 Units:	1 piece
Package Level 1 Gross Weight:	0.1 kg
Package Level 1 EAN:	8015644646868

Additional Information

Product Main Type:	Accessories for Emax
Product Name:	Accessory
Product Type:	ACC
Standards:	IEC
Suitable For:	X1
Suitable for Product Class:	SACE Emax

Certificates and Declarations (Document Number)

Data Sheet, Technical Information:	1SDC200009D0203
Declaration of Conformity - CE:	1SDL000165R0018

Classifications

Object Classification Code:	Q
UNSPSC:	39120000