

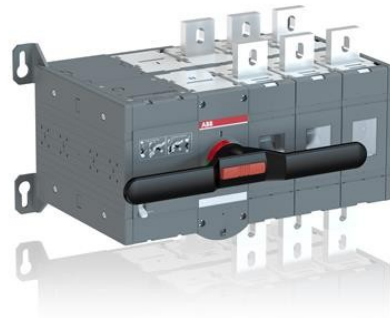


Electric Automation
Automation specialists

Reference: OTM1250E3CM230C
Code: 1SCA112676R1001

OTM1250E3CM230C MOTORIZED C/O
SWITCH

Buy it at [Electric Automation Network](#)



Including a handle for manual operation, bolt kit with nut and washers for all terminals and male connectors for control circuits. Include a storage clip for the handle and spare fuses.

Ordering

EAN:	6417019453910
Minimum Order Quantity:	1 piece
Customs Tariff Number:	85365080

Dimensions

Product Net Width:	507 mm
Product Net Height:	306 mm
Product Net Depth:	297 mm
Product Net Weight:	55 kg

Container Information

Package Level 1 Units:	1 piece
Package Level 1 Width:	440 mm
Package Level 1 Height:	565 mm
Package Level 1 Length:	700 mm

Package Level 1 Gross Weight:	55 kg
Package Level 1 EAN:	6417019453910

Environmental

RoHS Status:	Planned to follow EU Directive 2002/95/EC August 18, 2005 and amendment after 2009 Q4
--------------	---

Additional Information

Conventional Free-air Thermal Current (I_{th}):	q = 40 °C 1250 A
IIT Publishing Status:	Level 0 - Information enabled
Number of Poles:	3
Operating Mechanism:	Mechanism at the end of the switch
Pollution Degree:	3
Position of Line Terminals:	Top In - Bottom Out
Power Loss:	29 W
Product Main Type:	OTM1250_CM
Product Name:	MOTORIZED C/O SWITCH
Rated Impulse Withstand Voltage (U_{imp}):	12 kV
Rated Insulation Voltage (U_i):	1000 V
Rated Operational Current AC-21A (I_e):	(500 V) 1250 A (690 V) 1250 A
Rated Operational Current AC-22A (I_e):	(500 V) 1250 A (690 V) 1250 A
Rated Operational Current AC-23A (I_e):	(380 ... 415 V) 1250 A (500 V) 1250 A (690 V) 1250 A
Rated Operational Power AC-23A (P_e):	(230 V) Three Phase 400 kW (400 V) 710 kW (500 V) 900 kW (690 V) 1200 kW
Rated Operational Voltage:	1000 V
Rated Short-time Withstand Current (I_{cw}):	for 1 s 50 kiloampere rms

Certificates and Declarations (Document Number)

Data Sheet, Technical Information:	1SCC303003C0201
Declaration of Conformity - CE:	1SCC303027D0201
RoHS Information:	1SCC303036D0202

Classifications

ETIM 5:	EC000216 - Switch disconnecter
---------	--------------------------------

Object Classification Code:

Q