

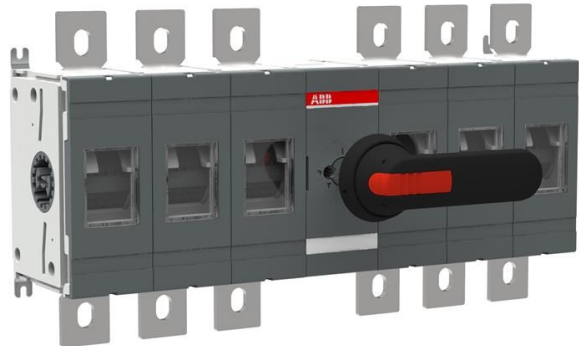


**Electric Automation**  
Automation specialists

Reference: OT630E33P  
Code: 1SCA107832R1001

OT630E33P switch-disconnector

Buy it at Electric Automation Network



Including terminal bolt kit, a black ON-OFF plastic handle and shaft as standard. The handle is IP65 protected, padlockable in the OFF position and with door interlock in the ON-position. The shaft is adjustable for a depth of installation ranges.

### Ordering

EAN:	6417019413310
Minimum Order Quantity:	1 piece
Customs Tariff Number:	85365080

### Dimensions

Product Net Width:	461 mm
Product Net Height:	250 mm
Product Net Depth:	140 mm
Product Net Weight:	11.3 kg

### Container Information

Package Level 1 Units:	1 piece
Package Level 1 Width:	400 mm
Package Level 1 Height:	150 mm
Package Level 1 Length:	500 mm
Package Level 1 Gross Weight:	11.3 kg
Package Level 1 EAN:	6417019413310

### Environmental

RoHS Status:	Planned to follow EU Directive 2002/95/EC August 18, 2005 and amendment after 2006-06-01
--------------	--

## Additional Information

Conventional Free-air Thermal Current ( $I_{th}$ ):	q = 40 °C 630 A
Conventional Thermal Current ( $I_{the}$ ):	Fully Enclosed 630 A
Earthing Switch Type:	No Additional Type
Handle Type:	Pistol
IIT Publishing Status:	Level 0 - Information enabled
Includes:	Handle and Shaft
Mounting Type:	Normal
Number of Poles:	6
Operating Mechanism:	Mechanism between the poles
Operating Mode:	Front Operated
Pollution Degree:	3
Position of Line Terminals:	Top In - Bottom Out
Power Loss:	at Rated Operating Conditions per Pole 25.0 W
Product Main Type:	OT630
Product Name:	Switch-disconnector
Rated Impulse Withstand Voltage ( $U_{imp}$ ):	12 kV
Rated Insulation Voltage ( $U_i$ ):	1000 V
Rated Operational Current DC-21B ( $I_e$ ):	(550 V) 600 A (750 V) 600 A (800 V) 600 A (1000 V) 600 A
Rated Operational Voltage:	1000 V
Rated Short-time Withstand Current ( $I_{cw}$ ):	for 1 s 20 kiloampere rms
Special Functions:	No
Standards:	IEC
Terminal Type:	Lug terminals

## Certificates and Declarations (Document Number)

Data Sheet, Technical Information:	1SCC301020C0201
Declaration of Conformity - CE:	1SCC301140D0202
RoHS Information:	1SCC301149D0202

## Classifications

ETIM 5:	EC000216 - Switch disconnector
---------	--------------------------------

Object Classification Code:

Q