

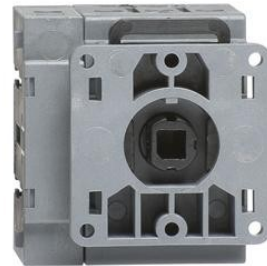


Electric Automation
Automation specialists

Reference: OT25FT4N2
Code: 1SCA104900R1001

OT25FT4N2 switch-disconnector

Buy it at Electric Automation Network



Front operated switch-disconnector. Types OT 16...125 include protected terminal clamps, IP 20.

Ordering

EAN:	6417019390437
Minimum Order Quantity:	10 piece
Customs Tariff Number:	85365080

Dimensions

Product Net Width:	49 mm
Product Net Height:	52 mm
Product Net Depth:	54 mm
Product Net Weight:	0.16 kg

Container Information

Package Level 1 Units:	1 piece
Package Level 1 Width:	67 mm
Package Level 1 Height:	61 mm
Package Level 1 Length:	79 mm
Package Level 1 Gross Weight:	0.16 kg

Package Level 1 EAN:	6417019390437
----------------------	---------------

Environmental

RoHS Status:	Planned to follow EU Directive 2002/95/EC August 18, 2005 and amendment after 2009 Q3
--------------	---

Technical UL/CSA

Ampere Rating UL/CSA:	25 A
Horsepower Rating UL/CSA:	(acc. to UL 200 V) 7.5 Hp (acc. to UL 208 V) 7.5 Hp (acc. to UL 240 V) 7.5 Hp (acc. to UL 480 V) 15 Hp (acc. to UL 600 V) 20 Hp

Additional Information

Cable Cross-Section:	0.75...10 mm ²
Conventional Free-air Thermal Current (I_{th}):	q = 40 °C 32 A
Conventional Thermal Current (I_{the}):	Fully Enclosed 32 A
Earthing Switch Type:	No Additional Type
Handle Type:	None
IIT Publishing Status:	Level 0 - Information enabled
Includes:	None
Mounting Type:	Door Mounting
Number of Poles:	4
Operating Mechanism:	Mechanism on top of the switch
Operating Mode:	Front Operated
Order Multiple:	10 piece
Pollution Degree:	3
Position of Line Terminals:	Top In - Bottom Out
Power Loss:	at Rated Operating Conditions per Pole 0.6 W
Product Main Type:	OT25
Product Name:	Switch-disconnector
Rated Impulse Withstand Voltage (U_{imp}):	8 kV
Rated Insulation Voltage (U_i):	750 V
Rated Operational Current AC-21A (I_e):	(380 ... 415 V) 25 A (690 V) 25 A (500 V) 25 A
Rated Operational Current AC-22A (I_e):	(380 ... 415 V) 25 A (500 V) 25 A (690 V) 25 A

Rated Operational Current AC-23A (I_e):	(380 ... 415 V) 20 A (500 V) 20 A (690 V) 11 A
Rated Operational Power AC-23A (P_e):	(220 ... 240 V) 4 kW (400 V) 9 kW (415 V) 9 kW (500 V) 9 kW (690 V) 9 kW
Rated Operational Voltage:	750 V
Rated Short-time Withstand Current (I_{cw}):	for 1 s 0.5 kiloampere rms
Special Functions:	No
Standards:	IEC
Terminal Type:	Screw Terminals

Certificates and Declarations (Document Number)

Data Sheet, Technical Information:	1SCC301020C0201
Declaration of Conformity - CE:	1SCC301166D0201
RoHS Information:	1SCC301183D0201

Classifications

ETIM 5:	EC000216 - Switch disconnecter
Object Classification Code:	Q