

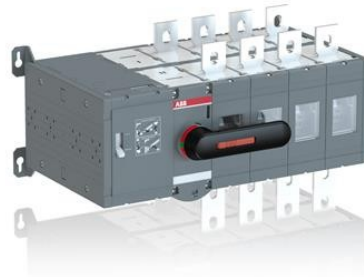


**Electric Automation**  
Automation specialists

Reference: OTM800E4CM230C  
Code: 1SCA022872R8340

OTM800E4CM230C MOTORIZED C/O  
SWITCH

Buy it at [Electric Automation Network](#)



Including a handle for manual operation, bolt kit with nut and washers for all terminals and male connectors for control circuits. Include a storage clip for the handle and spare fuses.

### Ordering

EAN:	6417019339344
Minimum Order Quantity:	1 piece
Customs Tariff Number:	85365080

### Dimensions

Product Net Width:	476 mm
Product Net Height:	250 mm
Product Net Depth:	299 mm
Product Net Weight:	25 kg

### Container Information

Package Level 1 Units:	1 piece
Package Level 1 Width:	310 mm
Package Level 1 Height:	330 mm
Package Level 1 Length:	560 mm

Package Level 1 Gross Weight:	25.19 kg
Package Level 1 EAN:	6417019339344

## Environmental

RoHS Status:	Planned to follow EU Directive 2002/95/EC August 18, 2005 and amendment after 2009 Q4
--------------	---

## Additional Information

Conventional Free-air Thermal Current ( $I_{th}$ ):	q = 40 °C 800 A
Conventional Thermal Current ( $I_{the}$ ):	Fully Enclosed 800 A
IIT Publishing Status:	Level 0 - Information enabled
Number of Poles:	4
Operating Mechanism:	Mechanism at the end of the switch
Pollution Degree:	3
Position of Line Terminals:	Top In - Bottom Out
Power Loss:	40 W
Product Main Type:	OTM800_CM
Product Name:	MOTORIZED C/O SWITCH
Rated Impulse Withstand Voltage ( $U_{imp}$ ):	12 kV
Rated Insulation Voltage ( $U_i$ ):	1000 V
Rated Operational Current AC-21A ( $I_e$ ):	(500 V) 800 A (690 V) 800 A
Rated Operational Current AC-22A ( $I_e$ ):	(500 V) 800 A (690 V) 800 A
Rated Operational Current AC-23A ( $I_e$ ):	(380 ... 415 V) 800 A (500 V) 800 A (690 V) 800 A
Rated Operational Power AC-23A ( $P_e$ ):	(220 ... 240 V) 250 kW (400 V) 450 kW (500 V) 560 kW (690 V) 800 kW
Rated Operational Voltage:	1000 V
Rated Short-time Withstand Current ( $I_{cw}$ ):	for 1 s 20 kiloampere rms

## Certificates and Declarations (Document Number)

Data Sheet, Technical Information:	1SCC303003C0201
Declaration of Conformity - CE:	1SCC303018D0201
RoHS Information:	1SCC303036D0202

## Classifications

ETIM 5:	EC000216 - Switch disconnecter
Object Classification Code:	Q