

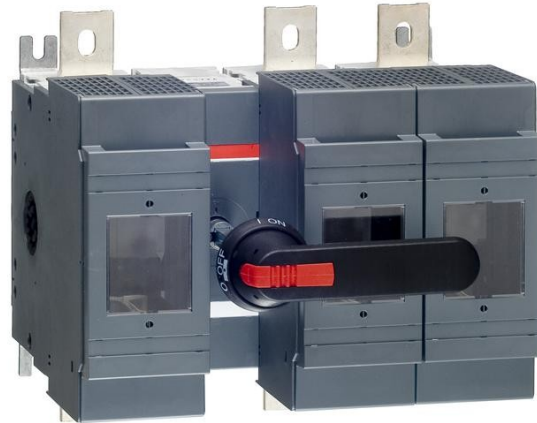


Electric Automation
Automation specialists

Reference: OS630D12P
Code: 1SCA022825R3810

OS630D12P Switch fuse

[Buy it at Electric Automation Network](#)



Including terminal bolt kit, a black ON-OFF plastic handle and shaft as standard. The handle is IP65 protected, padlockable in the OFF-position and with door interlock in the ON-position. The shaft is adjustable for a range of installation depths.

Ordering

EAN:	6417019283548
Minimum Order Quantity:	1 piece
Customs Tariff Number:	85365080

Dimensions

Product Net Width:	341 mm
Product Net Height:	306 mm
Product Net Depth:	233 mm
Product Net Weight:	13.5 kg

Container Information

Package Level 1 Units:	1 piece
Package Level 1 Width:	328 mm
Package Level 1 Height:	260 mm
Package Level 1 Length:	365 mm
Package Level 1 Gross Weight:	13.5 kg
Package Level 1 EAN:	6417019283548

Environmental

RoHS Status:	Planned to follow EU Directive 2002/95/EC August 18, 2005 and amendment after 2006-05-01
--------------	--

Additional Information

Conventional Free-air Thermal Current (I_{th}):	$\eta = 40\text{ °C}$ 630 A
Conventional Thermal Current (I_{the}):	Fully Enclosed 570 A
Fuse Size:	3
Fuse System:	DIN
Fuse Type:	DIN
Handle Type:	Pistol Handle
IIT Publishing Status:	Level 0 - Information enabled
Includes:	Handle and Shaft
Mounting Type:	Normal
Number of Poles:	3
Operating Mechanism:	Mechanism between the poles
Operating Mode:	Front Operated
Pollution Degree:	3
Position of Line Terminals:	Top In - Bottom Out
Power Loss:	at Rated Operating Conditions per Pole 46 W
Product Main Type:	OS630
Product Name:	Switch fuse
Rated Impulse Withstand Voltage (U_{imp}):	12 kV
Rated Insulation Voltage (U_i):	1000 V
Rated Operational Current AC-21A (I_e):	(690 V) 630 A (500 V) 630 A (380 ... 415 V) 630 A
Rated Operational Current AC-22A (I_e):	(380 ... 415 V) 630 A (500 V) 630 A (690 V) 630 A
Rated Operational Current AC-23A (I_e):	(500 V) 630 A (380 ... 415 V) 630 A (690 V) 630 A
Rated Operational Power AC-23A (P_e):	(220 ... 240 V) 200 kW (400 V) 355 kW (415 V) 355 kW (500 V) 450 kW (690 V) 630 kW
Rated Operational Voltage:	690 V AC
Standards:	IEC
Terminal Type:	Lug terminals

Terminal Width:	39 mm
Tightening Torque:	acc. IEC 60947-1 50 ... 75 N·m

Certificates and Declarations (Document Number)

Data Sheet, Technical Information:	1SCC311013C0201
Declaration of Conformity - CE:	1SCC311112D0201
RoHS Information:	1SCC311108D0202

Classifications

E-nummer:	3172095
ETIM 5:	EC001040 - Fuse switch disconnecter
Object Classification Code:	Q