

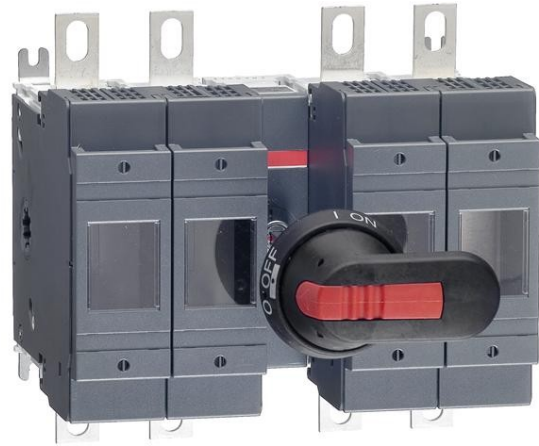


Electric Automation
Automation specialists

Reference: OS200D22N2P
Code: 1SCA022721R3130

OS200D22N2P Switch fuse

Buy it at Electric Automation Network



Including terminal bolt kit, a black ON-OFF plastic handle and shaft as standard. The handle is IP65 protected, padlockable in the OFF-position and with door interlock in the ON-position. The shaft is adjustable for a range of installation depths.

Ordering

EAN:	6417019231716
Minimum Order Quantity:	1 piece
Customs Tariff Number:	85365080

Dimensions

Product Net Width:	220 mm
Product Net Height:	199 mm
Product Net Depth:	149 mm
Product Net Weight:	4.2 kg

Container Information

Package Level 1 Units:	1 piece
Package Level 1 Width:	210 mm
Package Level 1 Height:	163 mm
Package Level 1 Length:	290 mm
Package Level 1 Gross Weight:	4.2 kg
Package Level 1 EAN:	6417019231716

Environmental

RoHS Status:	Planned to follow EU Directive 2002/95/EC August 18, 2005 and amendment after 2006-05-01
--------------	--

Additional Information

Conventional Free-air Thermal Current (I_{th}):	q = 40 °C 200 A
Conventional Thermal Current (I_{the}):	Fully Enclosed 200 A
Fuse Size:	0
Fuse System:	DIN
Fuse Type:	DIN
Handle Type:	Pistol Handle
IIT Publishing Status:	Level 0 - Information enabled
Includes:	Handle and Shaft
Mounting Type:	Normal
Number of Poles:	4
Operating Mechanism:	Mechanism between the poles
Operating Mode:	Front Operated
Position of Line Terminals:	Top In - Bottom Out
Power Loss:	at Rated Operating Conditions per Pole 8 W
Product Main Type:	OS200
Product Name:	Switch fuse
Rated Operational Current AC-21A (I_e):	(690 V) 200 A (380 ... 415 V) 200 A (500 V) 200 A
Rated Operational Current AC-22A (I_e):	(380 ... 415 V) 200 A (500 V) 200 A (690 V) 200 A
Rated Operational Current AC-23A (I_e):	(380 ... 415 V) 200 A (690 V) 200 A (500 V) 200 A
Rated Operational Power AC-23A (P_e):	(220 ... 240 V) 60 kW (400 V) 110 kW (415 V) 110 kW (500 V) 132 kW (690 V) 200 kW
Rated Operational Voltage:	690 V AC
Standards:	IEC
Terminal Type:	Lug terminals

Certificates and Declarations (Document Number)

BV Certificate:	1SCC311103D0201
-----------------	-----------------

Data Sheet, Technical Information:	1SCC311013C0201
Declaration of Conformity - CE:	1SCC311091D0201
GL Certificate:	1SCC311097D0201
LR Certificate:	1SCC311102D0201
RoHS Information:	1SCC311108D0202

Classifications

E-nummer:	3172063
ETIM 5:	EC001040 - Fuse switch disconnecter
Object Classification Code:	Q