

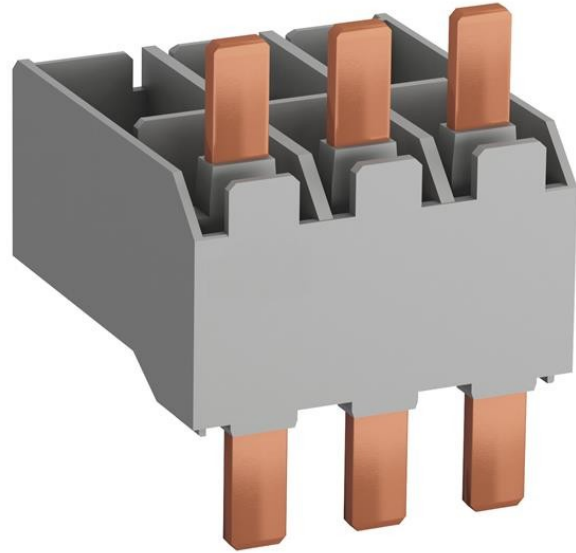


Electric Automation
Automation specialists

Reference: BEA65-4
Code: 1SBN083406R1000

BEA65-4 Connecting Link with Manual Motor Starter

[Buy it at Electric Automation Network](#)



BEA65-4 Connecting Link with Manual Motor Starter

Ordering

| | |
|-------------------------|---------------|
| EAN: | 3471523131156 |
| Minimum Order Quantity: | 1 piece |
| Customs Tariff Number: | 85389099 |

Dimensions

| | |
|---------------------|-------|
| Product Net Width: | 55 mm |
| Product Net Height: | 64 mm |
| Product Net Depth: | 60 mm |

Container Information

| | |
|-------------------------------|---------------|
| Package Level 1 Units: | 1 piece |
| Package Level 1 Width: | 61 mm |
| Package Level 1 Height: | 65 mm |
| Package Level 1 Length: | 77 mm |
| Package Level 1 Gross Weight: | 0.09 kg |
| Package Level 1 EAN: | 3471523131156 |
| Package Level 2 Units: | 48 piece |

| | |
|-------------------------|--------|
| Package Level 2 Width: | 230 mm |
| Package Level 2 Height: | 270 mm |
| Package Level 2 Length: | 340 mm |
| Product Packing Type: | Box |

Additional Information

| | |
|------------------------|--|
| IIT Publishing Status: | Level 0 - Information enabled |
| Product Main Type: | Accessories for Block Contactors |
| Product Name: | Connecting Link |
| Suitable For: | AF40 AF52 AF65 MO165 MS165 |
| Terminal Type: | Screw Terminals |

Certificates and Declarations (Document Number)

| | |
|------------------|-------------------------|
| cUL Certificate: | UL_20150521-E312527_5_3 |
| UL Listing Card: | UL_E312527 |

Classifications

| | |
|---------|----------|
| UNSPSC: | 39120000 |
|---------|----------|