

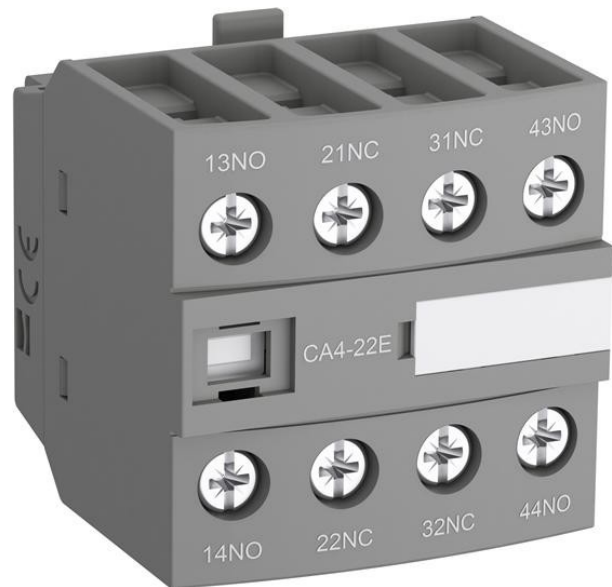


Electric Automation
Automation specialists

Reference: CA4-13N
Code: 1SBN010140R1213

CA4-13N Auxiliary Contact Block

[Buy it at Electric Automation Network](#)



CA4-13N Auxiliary Contact Block

Ordering

EAN:	3471523130272
Minimum Order Quantity:	1 piece
Customs Tariff Number:	85389099

Dimensions

Product Net Weight:	0.055 kg
---------------------	----------

Container Information

Package Level 1 Units:	1 piece
Package Level 1 Width:	46 mm
Package Level 1 Height:	46 mm
Package Level 1 Length:	46 mm
Package Level 1 Gross Weight:	0.055 kg
Package Level 1 EAN:	3471523130272
Package Level 2 Units:	192 piece
Package Level 3 Units:	4608 piece
Product Packing Type:	Box

Environmental

RoHS Status:	Planned to follow EU Directive 2002/95/EC August 18, 2005 and amendment after 2008 Q1
--------------	---

Technical UL/CSA

Tightening Torque UL/CSA:	Auxiliary Circuit 11 in-lb
---------------------------	----------------------------

Additional Information

Connecting Capacity-Auxiliary Circuit:	Flexible with Ferrule 1/2x 0.75 ... 2.5 mm ² Flexible with Insulated Ferrule 1x 0.75 ... 2.5 mm ² Flexible with Insulated Ferrule 2x 0.75 ... 1.5 mm ² Rigid 1/2x 1...2.5 mm ²
Conventional Free-air Thermal Current (I _{th}):	acc. to IEC 60947-5-1, q = 40 °C 16 A
IIT Publishing Status:	Level 0 - Information enabled
Maximum Electrical Switching Frequency:	AC-15 1200 cycles per hour DC-13 900 cycles per hour
Maximum Mechanical Switching Frequency:	3600 cycles per hour
Mounted Auxiliary Contacts:	1 NO, 3 NC
Number of Auxiliary Contacts NC:	3
Number of Auxiliary Contacts NO:	1
Product Main Type:	Accessories for Block Contactors
Product Name:	Auxiliary Contact Block
Rated Frequency (f):	Auxiliary Circuit 50 / 60 Hz
Rated Impulse Withstand Voltage (U _{imp}):	6 kV
Rated Insulation Voltage (U _i):	acc. to UL/CSA 600 V acc. to IEC 60947-5-1 and VDE 0110 (Gr. C) 690 V
Rated Operational Current AC-15 (I _e):	(220 / 240 V) 4 A (24 / 127 V) 6 A (400 / 440 V) 3 A (500 V) 2 A (690 V) 2 A
Rated Operational Current DC-13 (I _e):	(110 V) 0.55 A / 60 W (125 V) 0.55 A / 69 W (220 V) 0.27 A / 60 W (24 V) 6 A / 144 W (250 V) 0.27 A / 68 W (400 V) 0.15 A / 60 W (48 V) 2.8 A / 134 W (500 V) 0.13 A / 65 W (600 V) 0.1 A / 60 W (72 V) 1 A / 72 W
Rated Operational Voltage:	Auxiliary Circuit 24 ... 690 V
Rated Short-time Withstand Current (I _{cw}):	for 0.1 s 140 A for 1 s 100 A

RoHS Date:	20090609
Suitable For:	NF
Terminal Type:	Screw Terminals
Tightening Torque:	Auxiliary Circuit 1.2 N·m
Wire Stripping Length:	Auxiliary Circuit 10 mm

Certificates and Declarations (Document Number)

ABS Certificate:	ABS_15-GE1349500-PDA_90682247
CB Certificate:	CB_SE_70922A2
CCC Certificate:	CCC_2013010304651497
cUL Certificate:	UL_20091128-E252354-3-1
Data Sheet, Technical Information:	1SBC100173C0201
Declaration of Conformity - CE:	1SBD250167C2000
EAC Certificate:	EAC_RU C-FR ME77 B01048
GOST Certificate:	GOST_POCCFR.ME77.B07174.pdf
LR Certificate:	LRS_1300087E1
RINA Certificate:	RINA_ELE084013XG
RMRS Certificate:	RMRS_1300133124
RoHS Information:	1SBD251010E1000

Classifications

E-nummer:	3211418
ETIM 4:	EC002498 - Accessories for low-voltage switch technology
ETIM 5:	EC002498 - Accessories for low-voltage switch technology
Object Classification Code:	K
UNSPSC:	39121500