

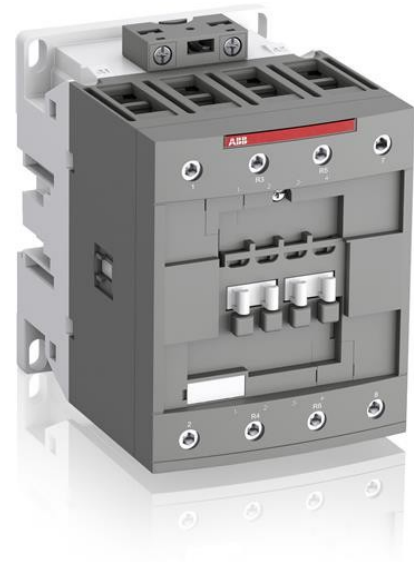


Electric Automation
Automation specialists

Reference: AF80-22-00-41
Code: 1SBL397501R4100

AF80-22-00-41 24-60V50/60HZ
Contactor

Buy it at Electric Automation Network



AF80 4-pole contactors are used for controlling power circuits up to 690 V AC and 440 V DC. They are mainly used for controlling non-inductive or slightly inductive loads (i.e. resistance furnaces...). AF... contactors include an electronic coil interface accepting a wide control voltage $U_c \text{ min.} \dots U_c \text{ max.}$ Only four coils cover control voltages between 24...500 V 50/60 Hz. AF contactors can manage large control voltage variations. One coil can be used for different control voltages used worldwide without any coil change. AF contactors have built-in surge protection and do not require additional surge suppressors. The AF... series 4-pole contactors are of the block type design. - Main poles and auxiliary contact blocks: 2 N.O. + 2 N.C. main poles, front and side-mounted add-on auxiliary contact blocks (mechanically-linked auxiliary contacts compliant with Annex L of IEC 60947-5-1. N.C. mirror contacts compliant with Annex F of IEC 60947-4-1) - Control circuit: AC operated - Accessories: a wide range of accessories is available.

Ordering

| | |
|-------------------------|---------------|
| EAN: | 3471523133907 |
| Minimum Order Quantity: | 1 piece |
| Customs Tariff Number: | 85369085 |

Dimensions

| | |
|--------------------|--------|
| Product Net Width: | 90 mm |
| Product Net Depth: | 116 mm |

| | |
|---------------------|----------|
| Product Net Height: | 125.5 mm |
| Product Net Weight: | 1.49 kg |

Container Information

| | |
|-------------------------------|---------------|
| Package Level 1 Units: | 1 piece |
| Package Level 1 Width: | 150 mm |
| Package Level 1 Length: | 150 mm |
| Package Level 1 Height: | 103 mm |
| Package Level 1 Gross Weight: | 1.62 kg |
| Package Level 1 EAN: | 3471523133907 |

Technical

| | |
|---|---|
| Number of Main Contacts NO: | 2 |
| Number of Main Contacts NC: | 2 |
| Number of Auxiliary Contacts NO: | 0 |
| Number of Auxiliary Contacts NC: | 0 |
| Rated Operational Voltage: | Main Circuit 690 V |
| Rated Frequency (f): | Main Circuit 50 / 60 Hz |
| Conventional Free-air Thermal Current (I_{th}): | acc. to IEC 60947-4-1, Open Contactors $q = 40\text{ °C}$ 125 A |
| Rated Operational Current AC-1 (I_e): | (690 V) 40 °C 125 A (690 V) 60 °C 105 A (690 V) 70 °C 90 A |
| Rated Operational Current AC-3 (I_e): | (220 / 230 / 240 V) 60 °C 80 A (380 / 400 V) 60 °C 80 A (415 V) 60 °C 80 A (440 V) 60 °C 80 A (500 V) 60 °C 65 A (690 V) 60 °C 49 A |
| Rated Operational Power AC-3 (P_e): | (220 / 230 / 240 V) 22 kW (380 / 400 V) 37 kW (415 V) 45 kW (440 V) 45 kW (500 V) 45 kW (690 V) 45 kW |
| Rated Short-time Withstand Current (I_{cw}): | at 40 °C Ambient Temp, in Free Air, from a Cold State 10 s 780 A at 40 °C Ambient Temp, in Free Air, from a Cold State 15 min 140 A at 40 °C Ambient Temp, in Free Air, from a Cold State 1 min 300 A at 40 °C Ambient Temp, in Free Air, from a Cold State 1 s 1200 A at 40 °C Ambient Temp, in Free Air, from a Cold State 30 s 450 A |
| Maximum Electrical Switching Frequency: | AC-1 600 cycles per hour |
| Rated Insulation Voltage (U_i): | acc. to UL/CSA 600 V acc. to IEC 60947-4-1 and VDE 0110 (Gr. C) 1000 V |

| | |
|--|--|
| Rated Impulse Withstand Voltage (U _{imp}): | 8 kV |
| Maximum Mechanical Switching Frequency: | 3600 cycles per hour |
| Rated Control Circuit Voltage (U _c): | 50 Hz 24 ... 60 V 60 Hz 24 ... 60 V DC Operation - V |
| Connecting Capacity-Main Circuit: | Flexible with Ferrule 1/2x 6...50 mm ² Rigid 1x 6...70 mm ² Rigid 2x 6...50 mm ² |
| Connecting Capacity-Control Circuit: | Flexible with Ferrule 1/2x 0.75 ... 2.5 mm ² Rigid 1/2x 1...2.5 mm ² |
| Wire Stripping Length: | Main Circuit 17 mm |
| Degree of Protection: | acc. to IEC 60529, IEC 60947-1, EN 60529 Coil Terminals IP20 acc. to IEC 60529, IEC 60947-1, EN 60529 Main Terminals IP10 |
| Terminal Type: | Screw Terminals |

Environmental

| | |
|---|--|
| Ambient Air Temperature: | Close to Contactor for Storage -60...+80 °C Near Contactor for Operation in Free Air -40 ... +70 °C |
| Maximum Operating Altitude Permissible: | 3000 m |

Technical UL/CSA

| | |
|----------------------------|---|
| General Use Rating UL/CSA: | (600 V AC) 105 A |
| Horsepower Rating UL/CSA: | (120 V AC) Single Phase 7-1/2 Hp (240 V AC) Single Phase 15 Hp (200 ... 208 V AC) Three Phase 25 Hp (220 ... 240 V AC) Three Phase 30 Hp (440 ... 480 V AC) Three Phase 60 Hp (550 ... 600 V AC) Three Phase 75 Hp |

Certificates and Declarations (Document Number)

| | |
|---------------------------------|-----------------|
| CB Certificate: | CB_SE_77417 |
| Declaration of Conformity - CE: | 1SBD250182C1000 |

Classifications

| | |
|---------|---|
| ETIM 5: | EC000066 - Magnet contactor, AC-switching |
| UNSPSC: | 39121529 |