



Automatización Eléctrica

Especialistas en Automatización

At the end of this document you will find links to products related to this catalog. You can go directly to our shop by clicking [HERE](#)

General Information

Extended Product Type:	C2SS2-30U-10
Product ID:	1SFA619201R3017
EAN:	7320500246139
Catalog Description:	SELECTOR SWITCH#C2SS2-30U-10
Long Description:	Compact Selector Switch - 2-pos Fixed A&C - Short handle - Grey - Non-illuminated - Chrome metal - 1NO

Categories

Products » Low Voltage Products and Systems » Control Products » Pilot Devices » Pilot Devices - Compact Range

Ordering

EAN:	7320500246139
Minimum Order Quantity:	10 piece
Customs Tariff Number:	85369001

Dimensions

Product Net Width:	0.030 m
Product Net Height:	0.030 m
Product Net Depth:	0.072 m
Product Net Weight:	0.028 kg

Container Information

Package Level 1 Units:	10 piece
Package Level 1 Width:	0.1 m
Package Level 1 Height:	0.03 m
Package Level 1 Length:	0.1 m
Package Level 1 Gross Weight:	0.028 kg
Package Level 2 Units:	10

Environmental

Ambient Air Temperature:	Operation -25 ... +70 °C Storage -30 ... +85 °C
RoHS Status:	Following EU Directive 2002/95/EC August 18, 2005 and amendment

Additional Information

Actuator Type:	Short handle
Bezel Material:	Chrome metal
Block:	1NO
Color:	Grey
Degree of Protection:	acc. to IEC 60529, IEC 60947-1, EN 60529 Auxiliary Terminals IP20
Function:	Maintained
IIT Publishing Status:	Level 0 - Information enabled
Illumination:	Non-illuminated
Maintained Positions:	A, C
Mechanical Durability:	0.5 million
Number of Auxiliary Contacts NO:	1
Product Main Type:	C2SS2
Product Name:	Selector Switch
Product Range:	Compact
Product Type:	C2SS
Rated Frequency (f):	Supply Circuit 50 Hz Supply Circuit 60 Hz
Rated Operational Current AC-15 (I _e):	(220 / 240 V) 1 A (24 / 127 V) 1.5 A
Rated Operational Current DC-13 (I _e):	(125 V) 0.2 A (24 V) 0.3 A
RoHS Date:	0626 5
Sub-Function:	2-position

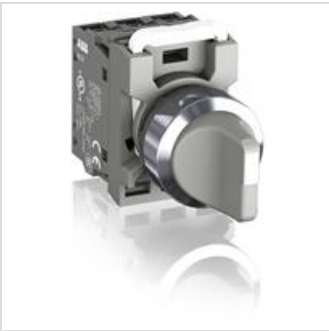
Certificates and Declarations (Document Number)

Data Sheet, Technical Information: 1SFC151003C0201

Declaration of Conformity - CE:	1SFA1-70
RoHS Information:	1SFC151012D0202

Classifications

ETIM 4:	EC002024 - Accessories for control circuit devices
ETIM 5:	EC002024 - Accessories for control circuit devices
Object Classification Code:	S
UNSPSC:	39121500





Automatización Eléctrica
Especialistas en Automatización

Below is a list of articles with direct links to our shop Electric Automation Network where you can see:

- Quote per purchase volume in real time.
- Online documentation and datasheets of all products.
- Estimated delivery time enquiry in real time.
- Logistics systems for the shipment of materials almost anywhere in the world.
- Purchasing management, order record and tracking of shipments.

To access the product, [click on the green button](#).

Product	Code	Reference	Product link
SELECTOR SWITCH#C2SS2-30U-10	1SFA619201R3017	C2SS2-30U-10	Buy on EAN