

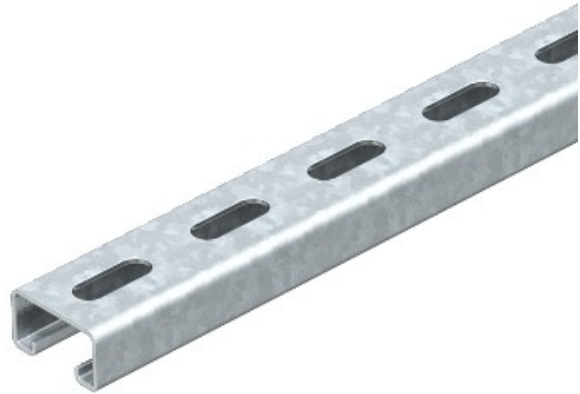


Electric Automation
Automation specialists

Referencia: MS 21 L 2M V4A
Código: 1122476

Perfil carriles perforada, anchura de ranura de 22 mm, 2000x41x21, acero inoxidable, grado 316 Ti, VA, 1.4571

[Comprar en Electric Automation Network](#)



Los valores estáticos:

$A = 1,64837 \text{ cm}^2$

$I_y = 0,952339 \text{ cm}^4$

$I_z = 4,5113 \text{ cm}^4$

$W_y = 0,888299 \text{ cm}^3$

$W_z = 2,20087 \text{ cm}^3$