

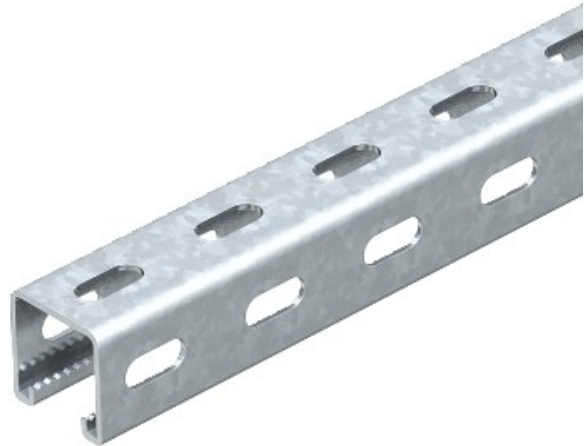


**Electric Automation**  
Automation specialists

Referência: MS 41 LS1M 2 V2A  
Código: 1123014

perfor perfil., slot largura 22mm,  
1000x41x41, aço inoxidável 1.4301, VA,  
1.4301

A partir de Electric Automation Network



Valores estáticos:

$A = 2,44837 \text{ cm}^2$

$I_y = 5,17636 \text{ cm}^4$

$I_z = 7,556 \text{ cm}^4$

$W_y = 2,51257 \text{ cm}^3$

$W_z = 2,68608 \text{ cm}^3$