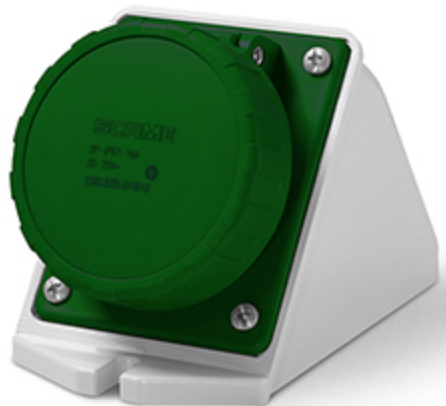


Product Technical Sheet

21 feb 2022 17:34



535.M016134 BASE MURAL

16A 3P 3h 20-25V 40-50V 400Hz Bornes con tornillo

Product Approvals

| TECHDATA | | STANDARDS AND LAWS | |
|------------------------------|---------------------|--------------------|---|
| Tipo de producto | BASE MURAL | EN 60309-1 (1999) | [European Standard] Plugs, socket-outlets and couplers for industrial purposes. Part 1: General requirements |
| Serie comercial | Serie IEC309 | EN 60309-2 (1999) | [European Standard] Plugs, socket-outlets and couplers for industrial purposes. Part 2: Dimensional interchangeability requirements for pin and contact-tube accessories of harmonized configurations |
| Descripción | BASE MURAL | | |
| Tipo de instalación | MURAL | | |
| Intensidad nominal | 16A | | |
| Polos | 3P | | |
| Posición de hora | 3h | | |
| Tensión nominal (range) | 0-50V | | |
| Tensión nominal | 20-25V | | |
| Tensión nominal | 40-50V | | |
| Frecuencia nominal | 400Hz | | |
| Color | VERDE | | |
| Material | TERMOPLÁSTICO | | |
| Grado de protección | Watertight | | |
| Grado de protección IP | IP66/IP67 | | |
| Tipos de salidas disponibles | INCLINADA | | |
| Bornes | Bornes con tornillo | | |
| Material de los contactos | CuZn (latón) | | |

Salida del cable

M20X1,5