

## Product Technical Sheet

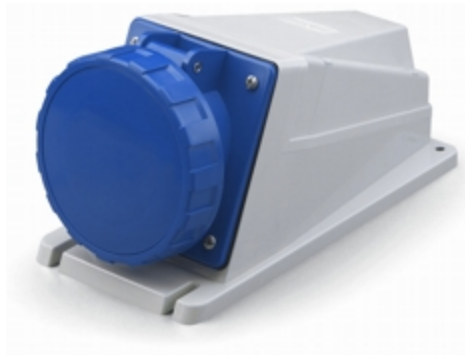
21 feb 2022 19:05



# 515.M12555

## BASE MURAL

125A 3P+N+T 9h 208-250V 50Hz 60Hz Bornes con tornillo



Product Approvals

| TECHDATA                     |                     | STANDARDS AND LAWS                |   |
|------------------------------|---------------------|-----------------------------------|---|
| Tipo de producto             | BASE MURAL          | EN 60309-1 (1999)                 | [European Standard] Plugs, socket-outlets and couplers for industrial purposes. Part 1: General requirements  |
| Serie comercial              | Serie OPTIMA        | EN 60309-2 (1999)                 | [European Standard] Plugs, socket-outlets and couplers for industrial purposes. Part 2: Dimensional interchangeability requirements for pin and contact-tube accessories of harmonized configurations |
| Descripción                  | BASE MURAL          |                                   |   |
| Tipo de instalación          | MURAL /EMPOTRADA    |                                   |   |
| Intensidad nominal           | 125A                | DIRECTIVE LOW VOLTAGE 2014/35 /UE | [European Directives] Low Voltage Directive   |
| Polos                        | 3P+N+T              |                                   |   |
| Posición de hora             | 9h                  |                                   |   |
| Tensión nominal (range)      | 200-250V            |                                   |   |
| Tensión nominal              | 208-250V            |                                   |   |
| Frecuencia nominal           | 60Hz                |                                   |   |
| Frecuencia nominal           | 50Hz                |                                   |   |
| Color                        | AZUL                |                                   |   |
| Material                     | TERMOPLÁSTICO       |                                   |   |
| Grado de protección          | Watertight          |                                   |   |
| Grado de protección IP       | IP66/IP67/IP69      |                                   |   |
| Grado de protección IK       | IK08                |                                   |   |
| Tipos de salidas disponibles | INCLINADA           |                                   |   |
| Bornes                       | Bornes con tornillo |                                   |   |

|                           |              |
|---------------------------|--------------|
| Material de los contactos | CuZn (latón) |
| Salida del cable          | M63X1,5      |