



**Adapter plate for GSTA1, 250A, 5mm**

**Part no. A-GSTA1/50/16**  
**Catalog No. 059864**

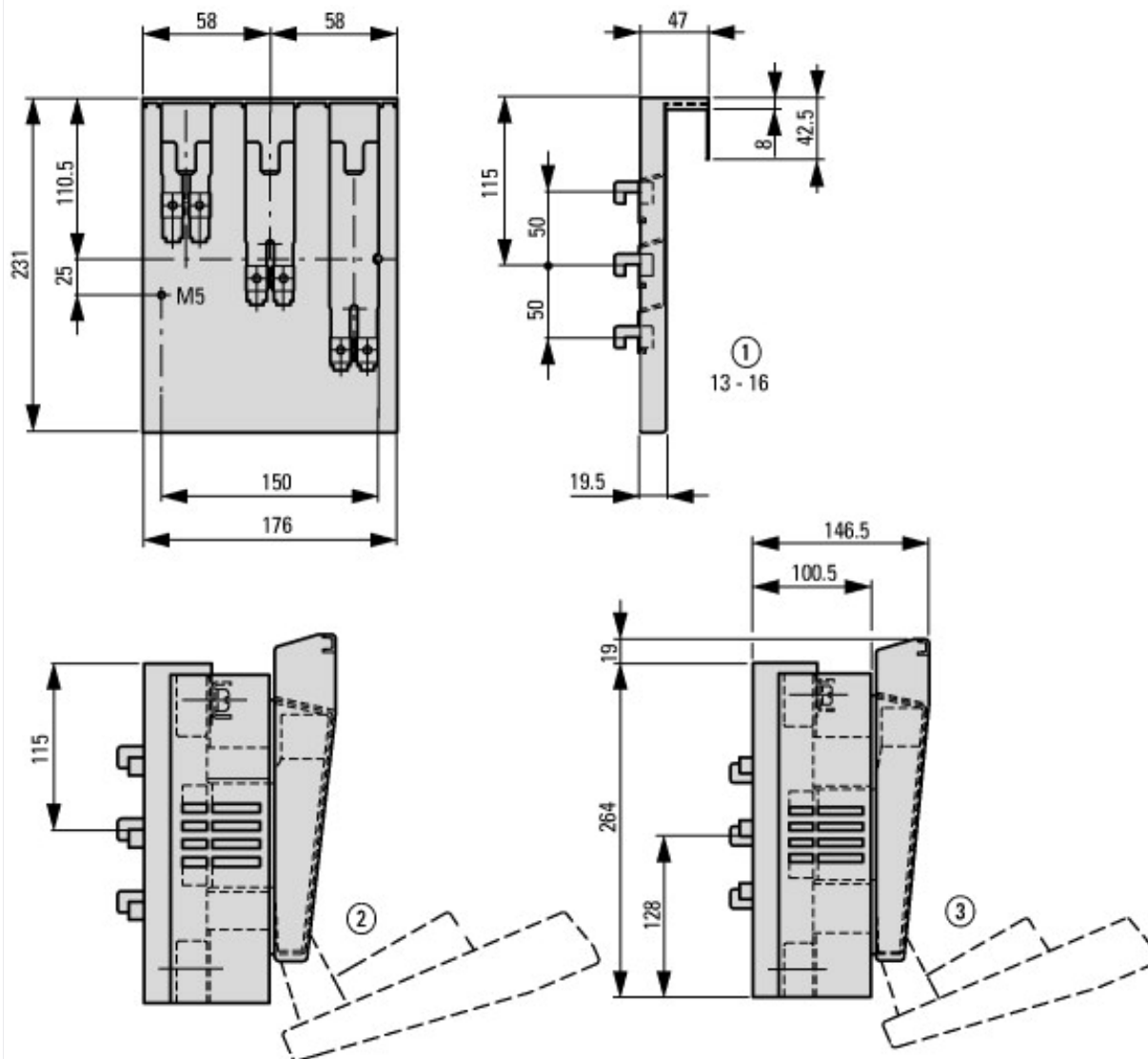
**Delivery program**

Rated operational current	$I_e$	A	250
Rated operational voltage	$U_e$	V AC	690
Fuse cartridge		Size	NH1
For use with			CU20 x 15

**Technical data ETIM 7.0**

Low-voltage industrial components (EG000017) / Busbar adapter (EC001531)			
Electric engineering, automation, process control engineering / Low-voltage switch technology / Busbar trunking system (LV circuitry) / Busbar adapter (low-voltage switching technology) (ecl@ss10.0.1-27-37-03-04 [ACN951011])			
Mounting rail armament			None
Type of electric connection			None
Rated current $I_n$		A	250
Min. busbar thickness		mm	5
Max. busbar thickness		mm	5
Width of the adapter		mm	176
Rail width		mm	20
Busbar distance		mm	0

## Dimensions



- ① Busbar thickness
- ② Outgoer at the bottom
- ③ Outgoer at the top