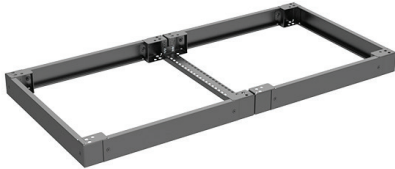


# PCP-PD

Plinth combining profiles | Potencia y Distribución



**Descripción:** Acts as a stabiliser when cabling is routed between bayed enclosures. With the PCP, plinths can be combined and fixed to the floor before the enclosures are mounted on them. The PCP can be used when cables have to go under the enclosure. For 200 mm high plinths, the PCP can be mounted in three different heights, top, middle or bottom. The hole pattern for cage nuts and M5x10 screws, allows accessories to be mounted.

**Material:** 2 mm steel plate.

**Acabado:** RAL 7022 structured powder coating.

**Cantidad por embalaje:** 2 Profiles. Mounting accessories included with PCP.

| Para armario |       |
|--------------|-------|
| P            | Ref.  |
| 400          | PCP04 |
| 600          | PCP06 |
| 800          | PCP08 |

\* Available for MCSL enclosures.