



IP 55 | IK 10



The mild steel operator interface control enclosure, OICE, has a pre-machined hole pattern to allow for the fixation to a swing arm, plus a removable front plate at an IP 55 protection degree. Components can be easily fitted thanks to the removable front plate, but will also be easily accessible through a rear door. Side handles on the enclosure allow for easy movement of the enclosure into the working position.

Material: Body and door are manufactured from 1.2 mm mild steel, front cover and handles manufactured from aluminium.

Body: Folded and seam welded, with maximum opening. The front fitted with an aluminium front panel. Handling grips mounted to front, left and right edges.

Rear door: Surface mounted, with 130° opening. Concealed removable hinges, with captive pin. Hinges can be mounted to allow left or right hand opening. Door profiles MMDP are available as an accessory.

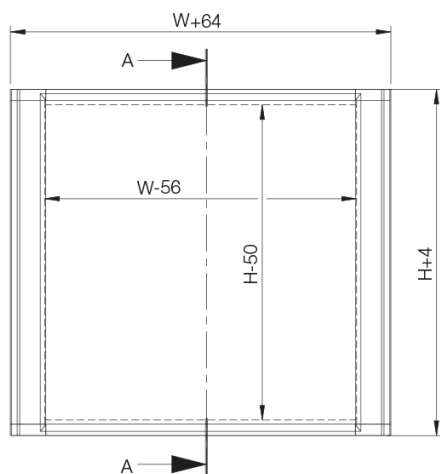
Lock: Customised lock, with double grip for easy opening of the door. Double-bit 3 mm insert and 90° movement. Other inserts and locks are available as an accessory.

Protection: IP 55 | IK 10.

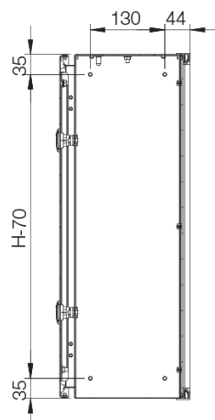
Finish: RAL 7035 structured powder coating. Top bottom profile RAL7016.

Delivery: Enclosure with aluminium front panel, rear door, plastic double-bit 3 mm key and mounting accessories.

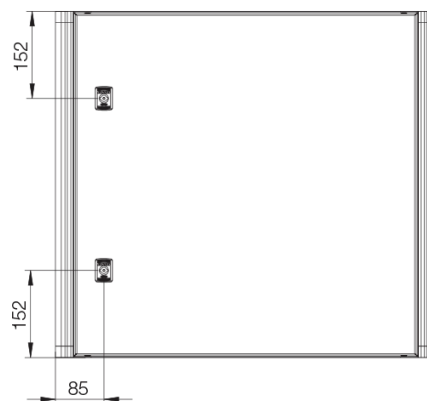
Front view



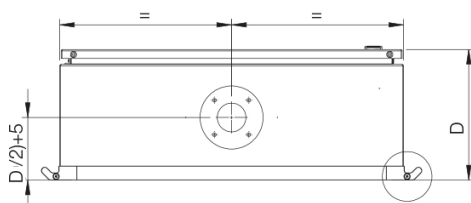
Sectional side view



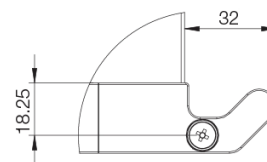
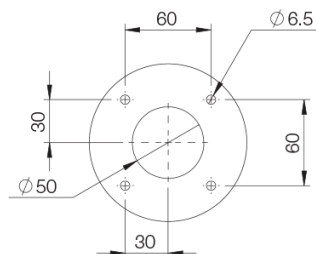
Rear view



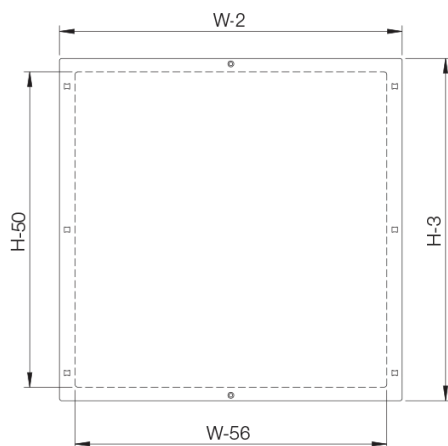
Top view



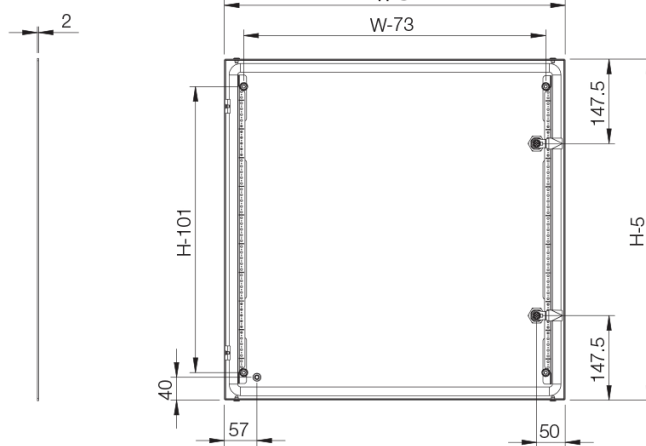
Detail view



Aluminium panel



Inside door view



Enclosure dimensions			
H	W	D	Item no.
300	300	155	OICE303015
300	400	210	OICE304021
400	400	210	OICE404021
400	600	210	OICE406021
500	500	210	OICE505021
500	600	210	OICE506021
600	600	210	OICE606021

OICE

Operator Interface Control Enclosure



CONNECT AND PROTECT