

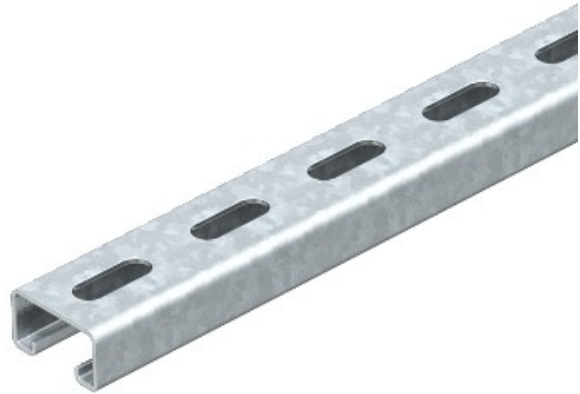


Electric Automation
Automation specialists

Riferimento: MS 21 L 200 FT
Codice: 1122933

perfor Profilo., larghezza slot 22mm,
200x41x21, zincato a caldo, DIN EN ISO
1461 Acciaio St

Acquista da Electric Automation Network



Valori statici:

$A = 1,64837 \text{ cm}^2$

$I_y = 0,952339 \text{ cm}^4$

$I_z = 4,5113 \text{ cm}^4$

$W_y = 0,888299 \text{ cm}^2$

$W_z = 2,20087 \text{ cm}^3$