

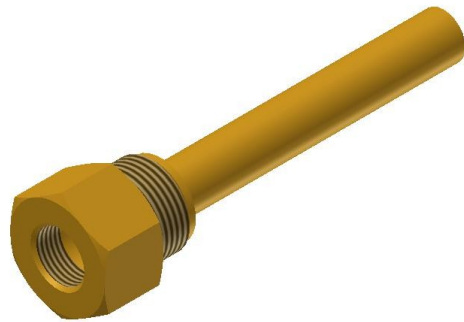


Electric Automation
Automation specialists

Riferimento: 060L340366

Codice identificativo ACCESSORI , Peso
0.184 kg , EAN no. 5702423150533 ,
Ext. sensor pocket diam. 15,0 mm

Acquista da Electric Automation Network



Codice identificativo	ACCESSORI
Peso	0.184 kg
EAN no.	5702423150533
Ext. sensor pocket diam.	15,0 mm
Pressure inlet conn. size	3/4
Pressure inlet conn. std.	ISO 228-1
Pressure inlet conn. type	G
Pressure inlet conn.	G 3/4
Pressure inlet Int./Ext.	External
Mat. tubo di prot.	Ottone

Sensor pocket conn. length	32 mm
Lunghezza del pozzetto sensore min.	4 3/8 in
Pozzetto min.	110 mm
Sensor pocket mat.	Ottone
Tipo	Pozzetto
Used for	CAS
Used for	KPS
Used for	MBC
Used for	RT