

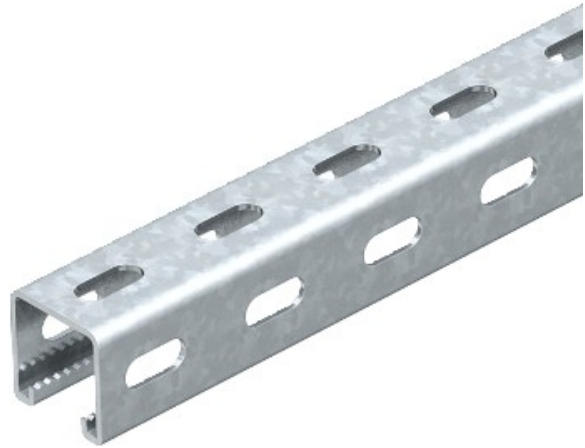


**Electric Automation**  
Automation specialists

Référence: MS 41 LS1M 2 V2A  
Code: 1123014

perfor Profil., fente largeur 22mm,  
1000x41x41, acier inoxydable 1.4301,  
VA, 1.4301

[Achat de Electric Automation Network](#)



Les valeurs statiques:

$A = 2,44837 \text{ cm}^2$

$I_y = 5,17636 \text{ cm}^4$

$I_z = 7,556 \text{ cm}^4$

$W_y = 2,51257 \text{ cm}^3$

$Z_m = 2,68608 \text{ cm}^3$