



Automatización Eléctrica
Especialistas en Automatización

At the end of this document you will find links to products related to this catalog. You can go directly to our shop by clicking [HERE](#)

Basic terminal blocks with interference current filter that can be fitted with solid-state relays

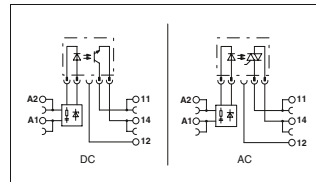
PLC basic terminal blocks with integrated filter to protect against interference voltages or currents due, for example, to long control lines

- The advantages:
- Resistant to interference currents
 - High relay release voltage
- Typical applications:
- Applications with long control lines
 - Use of AC output boards, resulting in residual AC currents
 - Screw, spring-cage, and push-in technology

Notes:	
Type of housing:	Polyamide PA non-reinforced, color: green.
Marking systems and mounting material	See Catalog 5
Separating plate PLC-ATP must be installed for voltages larger than 250 V (L1, L2, L3) between identical terminal blocks in adjacent modules. Potential bridging is then carried out with FBST 8-PLC... or FBST 500...	
For derating curves see page 345	
1) EMC: Class A product, see page 571	



Universal design



Technical data

Input data			
Nominal input voltage U _N	120 V AC	230 V AC	
Permissible range (with reference to U _N)	0.85 ... 1.1	0.8 ... 1.1	
Switching level (with optocoupler) 0 signal ("L")	≤ 0.4	≤ 0.4	
Typ. input current with U _N (50 /60 Hz)	7 mA / 8 mA	8.8 mA / 10 mA	
Typ. response time/switch-on time at U _N	6 ms	6 ms	
Typ. switch-off time at U _N	10 ms	10 ms	
Input circuit	Yellow LED, Bridge rectifier, Filter		
Output data with:	OPT...48DC/...	OPT...24DC/...	OPT...230AC/...
Max. switching voltage	48 V DC	30 V DC	253 V AC
Min. switching voltage	3 V DC	3 V DC	24 V AC
Limiting continuous current	100 mA	3 A	0.75 A
Max. inrush current	-	15 A (10 ms)	30 A (10 ms)
Output protection	Protection against polarity reversal, Surge protection	Protection against polarity reversal, Surge protection	RCV circuit
Voltage drop at limiting continuous current	< 1 V DC	< 200 mV	< 1 V AC
Leakage current in off state	-	-	< 1 mA
Max. phase shift (inductive consumer)	-	-	0.5
Max. load value I _F x t (t = 10 ms)	-	-	4.5 A ² s
General data			
Test voltage input/output	2.5 kV (50 Hz, 1 min.)		
Ambient temperature (operation)	-20°C ... 55°C		
Standards/regulations	IEC 60664, EN 50178, IEC 62103		
Pollution degree / Surge voltage category	2 / III		
Connection data solid / stranded / AWG	0.14 - 2.5 mm ² / 0.14 - 2.5 mm ² / 26 - 14		
Dimensions	W / H / D		

Ordering data

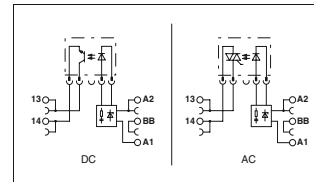
Description	Voltage U _N	Type	Order No.	Pcs. / Pkt.
PLC-INTERFACE basic terminal block, for plug-in miniature relays or solid-state relays				
With screw connection	120 V AC	PLC-BSC-120UC/21/SO461	2980319	10
With screw connection	230 V AC	PLC-BSC-230UC/21/SO461	2980335	10
With spring-cage connection	120 V AC	PLC-BSP-120UC/21/SO461	2980351	10
With spring-cage connection	230 V AC	PLC-BSP-230UC/21/SO461	2980377	10
With push-in connection	120 V AC	PLC-BPT-120UC/21/SO461	2900453	10
With push-in connection	230 V AC	PLC-BPT-230UC/21/SO461	2900455	10

Accessories

Plug-in solid-state relays			
Solid-state input relays	OPT-60DC/ 48DC/100	2966621	10
Solid-state power relays	OPT-60DC/ 24DC/ 2	2966605	10
Solid-state power relays	OPT-60DC/230AC/ 1	2967963	10



Sensor design



Technical data

Input data			
Nominal input voltage U _N	120 V AC	230 V AC	
Permissible range (with reference to U _N)	0.85 ... 1.1	0.8 ... 1.1	
Switching level (with optocoupler) 0 signal ("L")	≤ 0.4	≤ 0.4	
Typ. input current with U _N (50 /60 Hz)	7 mA / 8 mA	8.8 mA / 10 mA	
Typ. response time/switch-on time at U _N	6 ms	6 ms	
Typ. switch-off time at U _N	10 ms	10 ms	
Input circuit	Yellow LED, Bridge rectifier, Filter		
Output data with:	OPT...48DC/...	OPT...24DC/...	OPT...230AC/...
Max. switching voltage	48 V DC	30 V DC	253 V AC
Min. switching voltage	3 V DC	3 V DC	24 V AC
Limiting continuous current	100 mA	3 A	0.75 A
Max. inrush current	-	15 A (10 ms)	30 A (10 ms)
Output protection	Protection against polarity reversal, Surge protection	Protection against polarity reversal, Surge protection	RCV circuit
Voltage drop at limiting continuous current	< 1 V	< 200 mV	< 1 V
Leakage current in off state	-	-	< 1 mA
Max. phase shift (inductive consumer)	-	-	0.5
Max. load value I _F x t (t = 10 ms)	-	-	4.5 A ² s
General data			
Test voltage input/output	2.5 kV (50 Hz, 1 min.)		
Ambient temperature (operation)	-20°C ... 55°C		
Standards/regulations	IEC 60664, EN 50178, IEC 62103		
Pollution degree / Surge voltage category	2 / III		
Connection data solid / stranded / AWG	0.14 - 2.5 mm ² / 0.14 - 2.5 mm ² / 26 - 14		
Dimensions	W / H / D		

Ordering data

Type	Order No.	Pcs. / Pkt.
PLC-BSC-120UC/1/SEN/SO461	2980322	10
PLC-BSC-230UC/1/SEN/SO461	2980348	10
PLC-BSP-120UC/1/SEN/SO461	2980354	10
PLC-BSP-230UC/1/SEN/SO461	2980380	10
PLC-BPT-120UC/1/SEN/SO461	2900456	10
PLC-BPT-230UC/1/SEN/SO461	2900457	10

Accessories

OPT-60DC/ 48DC/100	2966621	10
OPT-60DC/ 24DC/ 2	2966605	10
OPT-60DC/230AC/ 1	2967963	10



Below is a list of articles with direct links to our shop Electric Automation Network where you can see:

- Quote per purchase volume in real time.
- Online documentation and datasheets of all products.
- Estimated delivery time enquiry in real time.
- Logistics systems for the shipment of materials almost anywhere in the world.
- Purchasing management, order record and tracking of shipments.

To access the product, [click on the green button](#).

Product	Code	Reference	Product link
6.2 mm PLC sensor basic terminal block with RCZ filter against interference currents and voltages on the control side, with sensor supply voltage distribution (BB), spring-cage connection, 120 V AC input voltage (without relay or solid-state relay)	2980364	PLC-BSP-120UC/ 1/SEN/SO46	Buy on EAN