



**Automatización Eléctrica**  
Especialistas en Automatización

At the end of this document you will find links to products related to this catalog. You can go directly to our shop by clicking [HERE](#)

# Relay modules

## PLC series

### Universal PLC series with PDT relay

PLC-R... is the relay series that can be used universally and consists of basic terminal blocks and plug-in relays with PDT contacts.

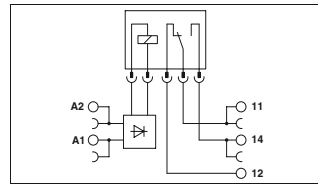
- The advantages:
  - Slim design
  - Screw, spring-cage, and push-in technology
  - Functional plug-in bridges
  - Integrated input and interference suppression circuit
  - RT III sealed relay
  - Safe isolation according to DIN EN 50178 between coil and contact
  - Efficient connection to system cabling using V8 adapter

#### Notes:

Type of housing: Polyamide PA non-reinforced, color: green.  
 Marking systems and mounting material See Catalog 5  
 Separating plate PLC-ATP must be installed for voltages larger than 250 V (L1, L2, L3) between identical terminal blocks in adjacent modules. Potential bridging is then carried out with FBST 8-PLC... or FBST 500...  
 If the specified maximum values for multi-layer contact relays are exceeded, the gold plating is destroyed. The maximum values of the power contact relay are then valid. This can result in a shorter service life than with a pure power contact.  
 For diagrams of operating voltage ranges, see page 343  
 Note: for marking material (ZB 6), see "CLIPLINE industrial connection technology, marking material for terminals, conductors, and cables".  
 1) 120 and 230 V types up to 55°C  
 2) 230 V types up to 55°C  
 3) EMC: Class A product, see page 571



1 PDT with power contact



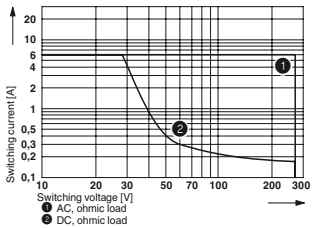
#### Technical data

Input data	①	②	③	④	⑤	⑥	⑦
Typ. input current at U <sub>N</sub>	15.3	9	11	9.2	4.8	3.5	3.2
Response/release time at U <sub>N</sub>	5/8	5/8	6/15	5/8	5/8	6/15	7/15
Input circuit DC	Yellow LED, Protection against polarity reversal, freewheeling diode						
Input circuit AC/DC	Yellow LED, Bridge rectifier						
Output data							
Contact material	AgSnO						
Max. switching voltage	250 V AC/DC						
Min. switching voltage	5 V (at 100 mA)						
Limiting continuous current	6 A						
Max. inrush current	(on request)						
Min. switching current	10 mA (at 12 V)						
General data							
Test voltage input/output	4 kV AC (50 Hz, 1 min.)						
Ambient temperature (operation)	-40°C ... 60°C						
Mechanical service life	2 x 10 <sup>7</sup> cycles						
Standards/regulations	IEC 60664, EN 50178, IEC 62103						
Connection data solid / stranded / AWG	0.14 - 2.5 mm <sup>2</sup> / 0.14 - 2.5 mm <sup>2</sup> / 26 - 14						
Dimensions	W / H / D			6.2 mm / 80 mm / 94 mm			

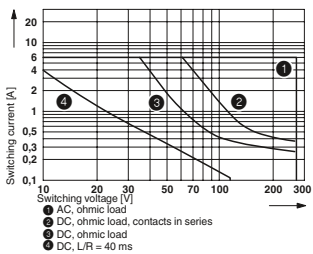
#### Ordering data

Description	Input voltage U <sub>N</sub>	Type	Order No.	Pcs. / Pkt.
<b>PLC INTERFACE, with screw connection</b>				
①	12 V DC	PLC-RSC-12DC(Z1*)	2966806	10
②	24 V DC	PLC-RSC-24DC(Z1*)	2966811	10
③	24 V AC/DC	PLC-RSC-24UC(Z1*)	2966814	10
④	48 V DC	PLC-RSC-48DC(Z1*)	2966113	10
⑤	60 V DC	PLC-RSC-60DC(Z1*)	2966139	10
⑥	120 V AC (110 V DC)	PLC-RSC-120UC(Z1*)	2966197	10
⑦	230 V AC (220 V DC)	PLC-RSC-230UC(Z1*)	2966207	10
<b>PLC INTERFACE, with spring-cage connection</b>				
①	12 V DC	PLC-RSP-12DC(Z1*)	2967439	10
②	24 V DC	PLC-RSP-24DC(Z1*)	2966472	10
③	24 V AC/DC	PLC-RSP-24UC(Z1*)	2966485	10
④	48 V DC	PLC-RSP-48DC(Z1*)	2966498	10
⑤	60 V DC	PLC-RSP-60DC(Z1*)	2966511	10
⑥	120 V AC (110 V DC)	PLC-RSP-120UC(Z1*)	2966524	10
⑦	230 V AC (220 V DC)	PLC-RSP-230UC(Z1*)	2966537	10
<b>PLC-INTERFACE, with push-in connection</b>				
①	12 V DC	PLC-RPT-12DC(Z1*)	2900316	10
②	24 V DC	PLC-RPT-24DC(Z1*)	2900299	10
③	24 V AC/DC	PLC-RPT-24UC(Z1*)	2900300	10
④	48 V DC	PLC-RPT-48DC(Z1*)	2900301	10
⑤	60 V DC	PLC-RPT-60DC(Z1*)	2900303	10
⑥	120 V AC (110 V DC)	PLC-RPT-120UC(Z1*)	2900304	10
⑦	230 V AC (220 V DC)	PLC-RPT-230UC(Z1*)	2900305	10

Electrical interrupting rating for PLC...21 with 1-PDT relay



Electrical interrupting rating for PLC...21-21 with 2-PDT relay

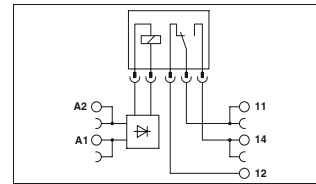


# Relay modules

## PLC series



1 PDT with multi-layer gold contact



#### Technical data

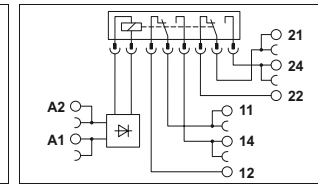
Input data	①	②	③	④	⑤	⑥	⑦
Typ. input current at U <sub>N</sub>	15.3	9	11	9.2	4.8	3.5	3.2
Response/release time at U <sub>N</sub>	5/8	5/8	6/15	5/8	5/8	6/15	7/15
Input circuit DC	Yellow LED, Protection against polarity reversal, freewheeling diode						
Input circuit AC/DC	Yellow LED, Bridge rectifier						
Output data							
Contact material	AgSnO, hard gold-plated						
Max. switching voltage	30 V AC / 36 V DC						
Min. switching voltage	100 mV (at 10 mA)						
Limiting continuous current	50 mA						
Max. inrush current	50 mA						
Min. switching current	1 mA (at 24 V)						
General data							
Test voltage input/output	4 kV AC (50 Hz, 1 min.)						
Ambient temperature (operation)	-40°C ... 60°C						
Mechanical service life	2 x 10 <sup>7</sup> cycles						
Standards/regulations	IEC 60664, EN 50178, IEC 62103						
Connection data solid / stranded / AWG	0.14 - 2.5 mm <sup>2</sup> / 0.14 - 2.5 mm <sup>2</sup> / 26 - 14						
Dimensions	W / H / D			6.2 mm / 80 mm / 94 mm			

#### Ordering data

Type	Order No.	Pcs. / Pkt.
PLC-RSC-12DC(Z1AU*)	2966919	10
PLC-RSC-24DC(Z1AU*)	2966825	10
PLC-RSC-24UC(Z1AU*)	2966278	10
PLC-RSC-48DC(Z1AU*)	2966126	10
PLC-RSC-60DC(Z1AU*)	2966142	10
PLC-RSC-120UC(Z1AU*)	2966281	10
PLC-RSC-230UC(Z1AU*)	2966294	10
PLC-RSP-12DC(Z1AU*)	2967442	10
PLC-RSP-24DC(Z1AU*)	2966540	10
PLC-RSP-24UC(Z1AU*)	2966553	10
PLC-RSP-48DC(Z1AU*)	2966566	10
PLC-RSP-60DC(Z1AU*)	2966579	10
PLC-RSP-120UC(Z1AU*)	2966582	10
PLC-RSP-230UC(Z1AU*)	2966647	10
PLC-RPT-12DC(Z1AU*)	2900317	10
PLC-RPT-24DC(Z1AU*)	2900306	10
PLC-RPT-24UC(Z1AU*)	2900307	10
PLC-RPT-48DC(Z1AU*)	2900308	10
PLC-RPT-60DC(Z1AU*)	2900309	10
PLC-RPT-120UC(Z1AU*)	2900310	10
PLC-RPT-230UC(Z1AU*)	2900311	10



2 PDT with power contact



#### Technical data

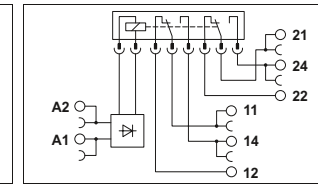
Input data	①	②	③	④	⑤	⑥	⑦
Typ. input current at U <sub>N</sub>	33	18	17.5	20	10	4.5	4.5
Response/release time at U <sub>N</sub>	8/10	8/10	8/10	8/10	8/10	7/10	7/10
Input circuit DC	Yellow LED, Protection against polarity reversal, freewheeling diode						
Input circuit AC/DC	Yellow LED, Bridge rectifier						
Output data							
Contact material	AgNi, hard gold-plated						
Max. switching voltage	250 V AC/DC						
Min. switching voltage	5 V AC/DC (at 10 mA)						
Limiting continuous current	6 A						
Max. inrush current	15 A (300 ms)						
Min. switching current	10 mA (at 5 V)						
General data							
Test voltage input/output	4 kV AC (50 Hz, 1 min.)						
Ambient temperature (operation)	-40°C ... 60°C						
Mechanical service life	3 x 10 <sup>7</sup> cycles						
Standards/regulations	IEC 60664, EN 50178, IEC 62103						
Connection data solid / stranded / AWG	0.14 - 2.5 mm <sup>2</sup> / 0.14 - 2.5 mm <sup>2</sup> / 26 - 14						
Dimensions	W / H / D			14 mm / 80 mm / 94 mm			

#### Ordering data

Type	Order No.	Pcs. / Pkt.
PLC-RSC-12DC(Z1AU*)	2967235	10
PLC-RSC-24DC(Z1AU*)	2967060	10
PLC-RSC-24UC(Z1AU*)	2967073	10
PLC-RSC-48DC(Z1AU*)	2967248	10
PLC-RSC-60DC(Z1AU*)	2967293	10
PLC-RSC-120UC(Z1AU*)	2967086	10
PLC-RSC-230UC(Z1AU*)	2967099	10
PLC-RSP-12DC(Z1AU*)	2912497	10
PLC-RSP-24DC(Z1AU*)	2912507	10
PLC-RSP-24UC(Z1AU*)	2912510	10
PLC-RSP-48DC(Z1AU*)	2912523	10
PLC-RSP-60DC(Z1AU*)	2912536	10
PLC-RSP-120UC(Z1AU*)	2912549	10
PLC-RSP-230UC(Z1AU*)	2912552	10
PLC-RPT-12DC(Z1AU*)	2900329	10
PLC-RPT-24DC(Z1AU*)	2900330	10
PLC-RPT-24UC(Z1AU*)	2900332	10
PLC-RPT-48DC(Z1AU*)	2900333	10
PLC-RPT-60DC(Z1AU*)	2900334	10
PLC-RPT-120UC(Z1AU*)	2900335	10
PLC-RPT-230UC(Z1AU*)	2900336	10



2 PDT with multi-layer gold contact



#### Technical data

Input data	①	②	③	④	⑤	⑥	⑦
Typ. input current at U <sub>N</sub>	33	18	17.5	20	10	4.5	4.5
Response/release time at U <sub>N</sub>	8/10	8/10	8/10	8/10	8/10	7/10	7/10
Input circuit DC	Yellow LED, Protection against polarity reversal, freewheeling diode						
Input circuit AC/DC	Yellow LED, Bridge rectifier						
Output data							
Contact material	AgNi, hard gold-plated						
Max. switching voltage	30 V AC / 36 V DC						
Min. switching voltage	100 mV (at 10 mA)						
Limiting continuous current	50 mA						
Max. inrush current	50 mA						
Min. switching current	1 mA (at 24 V)						
General data							
Test voltage input/output	4 kV AC (50 Hz, 1 min.)						
Ambient temperature (operation)	-40°C ... 60°C						
Mechanical service life	3 x 10 <sup>7</sup> cycles						
Standards/regulations	IEC 60664, EN 50178, IEC 62103						
Connection data solid / stranded / AWG	0.14 - 2.5 mm <sup>2</sup> / 0.14 - 2.5 mm <sup>2</sup> / 26 - 14						
Dimensions	W / H / D			14 mm / 80 mm / 94 mm			

#### Ordering data

Type	Order No.	Pcs. / Pkt.
PLC-RSC-12DC(Z1AU*)	2967277	10
PLC-RSC-24DC(Z1AU*)	2967125	10
PLC-RSC-24UC(Z1AU*)	2967112	10
PLC-RSC-48DC(Z1AU*)	2967280	10
PLC-RSC-60DC(Z1AU*)	2967303	10
PLC-RSC-120UC(Z1AU*)	2967138	10
PLC-RSC-230UC(Z1AU*)	2967141	10
PLC-RSP-12DC(Z1AU*)	2912565	10
PLC-RSP-24DC(Z1AU*)	2912578	10
PLC-RSP-24UC(Z1AU*)	2912581	10
PLC-RSP-48DC(Z1AU*)	2912594	10
PLC-RSP-60DC(Z1AU*)	2912604	10
PLC-RSP-120UC(Z1AU*)	2912617	10
PLC-RSP-230UC(Z1AU*)	2912620	10
PLC-RPT-12DC(Z1AU*)	2900337	10
PLC-RPT-24DC(Z1AU*)	2900338	10
PLC-RPT-24UC(Z1AU*)	2900339	10
PLC-RPT-48DC(Z1AU*)	2900340	10
PLC-RPT-60DC(Z1AU*)	2900341	10
PLC-RPT-120UC(Z1AU*)	2900342	10
PLC-RPT-230UC(Z1AU*)	2900343	10

Below is a list of articles with direct links to our shop Electric Automation Network where you can see:

- Quote per purchase volume in real time.
- Online documentation and datasheets of all products.
- Estimated delivery time enquiry in real time.
- Logistics systems for the shipment of materials almost anywhere in the world.
- Purchasing management, order record and tracking of shipments.

To access the product, [click on the green button.](#)

Product	Code	Reference	Product link
PLC relay, consisting of basic terminal block PLC-BSP../21-21 with spring-cage connection and pluggable miniature relay with power contact, for assembly on DIN rail NS 35/7.5, 2 PDT, input voltage 48 V DC	2912523	PLC-RSP-48DC/21-21	<a href="#">Buy on EAN</a>
PLC relay, consisting of basic terminal block PLC-BSP../21-21 with spring-cage connection and pluggable miniature relay with power contact, for assembly on DIN rail NS 35/7.5, 2 PDT, input voltage 60 V DC	2912536	PLC-RSP-60DC/21-21	<a href="#">Buy on EAN</a>
PLC Relay, consisting of basic terminal block PLC-BSP../21-21AU with spring-cage connection and pluggable miniature relay with multi-layer contact, for assembly on DIN rail NS 35/7.5, 2 PDT, input voltage 12 V DC	2912565	PLC-RSP-12DC/21-21AU	<a href="#">Buy on EAN</a>
PLC Relay, consisting of basic terminal block PLC-BSP../21-21AU with spring-cage connection and pluggable miniature relay with multi-layer contact, for assembly on DIN rail NS 35/7.5, 2 PDT, input voltage 48 V DC	2912594	PLC-RSP-48DC/21-21AU	<a href="#">Buy on EAN</a>
PLC Relay, consisting of basic terminal block PLC-BSP../21-21AU with spring-cage connection and pluggable miniature relay with multi-layer contact, for assembly on DIN rail NS 35/7.5, 2 PDT, input voltage 60 V DC	2912604	PLC-RSP-60DC/21-21AU	<a href="#">Buy on EAN</a>
PLC Relay, consisting of basic terminal block PLC-BSP../21-21AU with spring-cage connection and pluggable miniature relay with multi-layer contact, for assembly on DIN rail NS 35/7.5, 2 PDT, input voltage 120 V AC	2912617	PLC-RSP-120UC/21-21AU	<a href="#">Buy on EAN</a>

PLC Relay, consisting of basic terminal block PLC-BSP.../21-21AU with spring-cage connection and pluggable miniature relay with multi-layer contact, for assembly on DIN rail NS 35/7.5, 2 PDT, input voltage 230 V AC	2912620	PLC-RSP-230UC/21-21AU	<a href="#">Buy on EAN</a>
PLC relay, consisting of base terminal block PLC-BSP.../21 with spring-cage connection and pluggable miniature relay with power contact, for assembly on DIN rail NS 35/7.5, 1 PDT, input voltage 48 V DC	2966498	PLC-RSP- 48DC/21	<a href="#">Buy on EAN</a>
PLC relay, consisting of base terminal block PLC-BSP.../21 with spring-cage connection and pluggable miniature relay with power contact, for assembly on DIN rail NS 35/7.5, 1 PDT, input voltage 60 V DC	2966511	PLC-RSP- 60DC/21	<a href="#">Buy on EAN</a>
PLC relay, consisting of base terminal block PLC-BSP.../21 with spring-cage connection and pluggable miniature relay with multi-layer contact, for assembly on DIN rail NS 35/7.5, 1 PDT, input voltage 48 V DC	2966566	PLC-RSP- 48DC/21AU	<a href="#">Buy on EAN</a>
PLC relay, consisting of base terminal block PLC-BSP.../21 with spring-cage connection and pluggable miniature relay with multi-layer contact, for assembly on DIN rail NS 35/7.5, 1 PDT, input voltage 60 V DC	2966579	PLC-RSP- 60DC/21AU	<a href="#">Buy on EAN</a>