



Automatización Eléctrica
Especialistas en Automatización

At the end of this document you will find links to products related to this catalog. You can go directly to our shop by clicking [HERE](#). [HERE](#)

Electronic housing - CM125-LG/H 35/BO/DB/GH BK - 2941840

Please be informed that the data shown in this PDF Document is generated from our Online Catalog. Please find the complete data in the user's documentation. Our General Terms of Use for Downloads are valid (<http://phoenixcontact.com/download>)



Complete housing with vents, Cross connection: without bus connector, Color: black, Width: 125 mm, Constructional height: 138 mm, Number of positions cross connector: not relevant

The illustration shows versions CM 125-LG/H 35/BO/DB/GH

Why buy this product

- Easy snap-on mounting on symmetrical DIN rails according to EN 60715
- Rugged housing technology
- Flexible accommodation of different connection elements (from high-position connectors to electronic PCBs)
- Shock and contamination-proof accommodation of electronic components

Key Commercial Data

| | |
|--------------|---------------------|
| Packing unit | 5 STK |
| GTIN | 4 017918 126377 |

Technical data

General

| | |
|------------------|--------------------------------|
| Housing type | Complete housing |
| Housing material | Polycarbonate fiber reinforced |
| Color | black |

Ambient conditions

| | |
|---------------------------------|--|
| Ambient temperature (operation) | -40 °C ... 105 °C (depending on power dissipation) |
|---------------------------------|--|

Dimensions

| | |
|-----------------------|--------|
| Length | 102 mm |
| Constructional height | 138 mm |
| Width | 125 mm |

Technical data

| | |
|--|---------|
| Flammability rating according to UL 94 | V0 |
| Power dissipation without gap | 84.4 W |
| Power dissipation with 20 mm gap | 109.7 W |

Standards and Regulations

Electronic housing - CM125-LG/H 35/BO/DB/GH BK - 2941840

Technical data

Standards and Regulations

| | |
|--|----|
| Flammability rating according to UL 94 | V0 |
|--|----|

Classifications

eCl@ss

| | |
|------------|----------|
| eCl@ss 4.0 | 27180401 |
| eCl@ss 4.1 | 27180401 |
| eCl@ss 5.0 | 27180506 |
| eCl@ss 5.1 | 27180506 |
| eCl@ss 6.0 | 27180802 |
| eCl@ss 7.0 | 27182702 |
| eCl@ss 8.0 | 27182702 |
| eCl@ss 9.0 | 27182702 |

ETIM

| | |
|----------|----------|
| ETIM 2.0 | EC001031 |
| ETIM 3.0 | EC001031 |
| ETIM 4.0 | EC001031 |
| ETIM 5.0 | EC001031 |

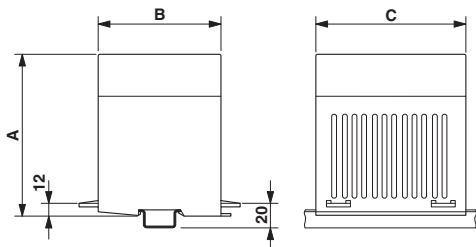
UNSPSC

| | |
|---------------|----------|
| UNSPSC 6.01 | 31261501 |
| UNSPSC 7.0901 | 31261501 |
| UNSPSC 11 | 31261501 |
| UNSPSC 12.01 | 31261501 |
| UNSPSC 13.2 | 31261501 |

Drawings

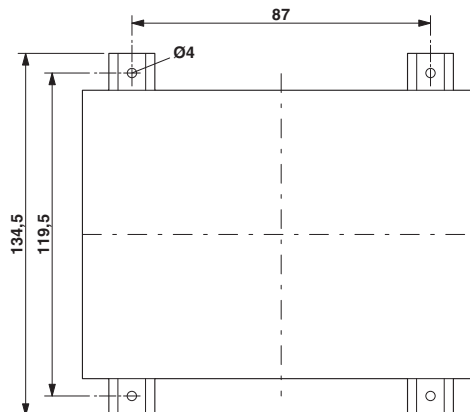
Electronic housing - CM125-LG/H 35/BO/DB/GH BK - 2941840

Dimensional drawing

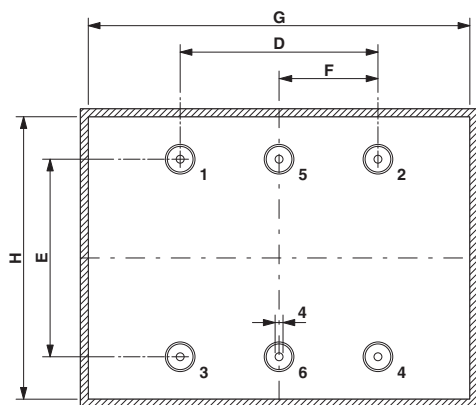


Dimension A: 138 mm; dimension B: 102 mm; dimension C: 125 mm

Dimensional drawing

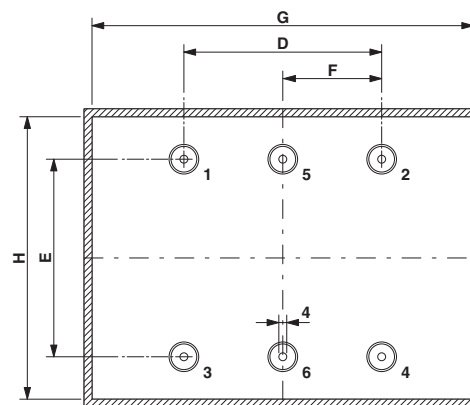


Dimensional drawing



Dimension D: 87.5 mm; E: 70.0 mm; G: 119.0 mm; H: 96.0 mm
 Spacer pins 1 - 4: Height 23 mm; \varnothing 4 mm

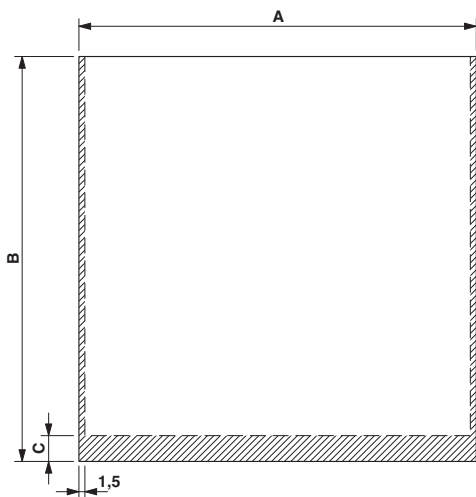
Dimensional drawing



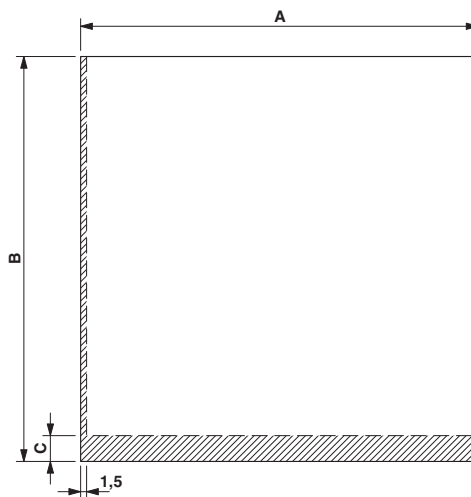
Dimension D: 87.5 mm; E: 70.0 mm; G: 119.0 mm; H: 96.0 mm
 Spacer pins 1 - 4: Height 23 mm; \varnothing 4 mm

Electronic housing - CM125-LG/H 35/BO/DB/GH BK - 2941840

Dimensional drawing



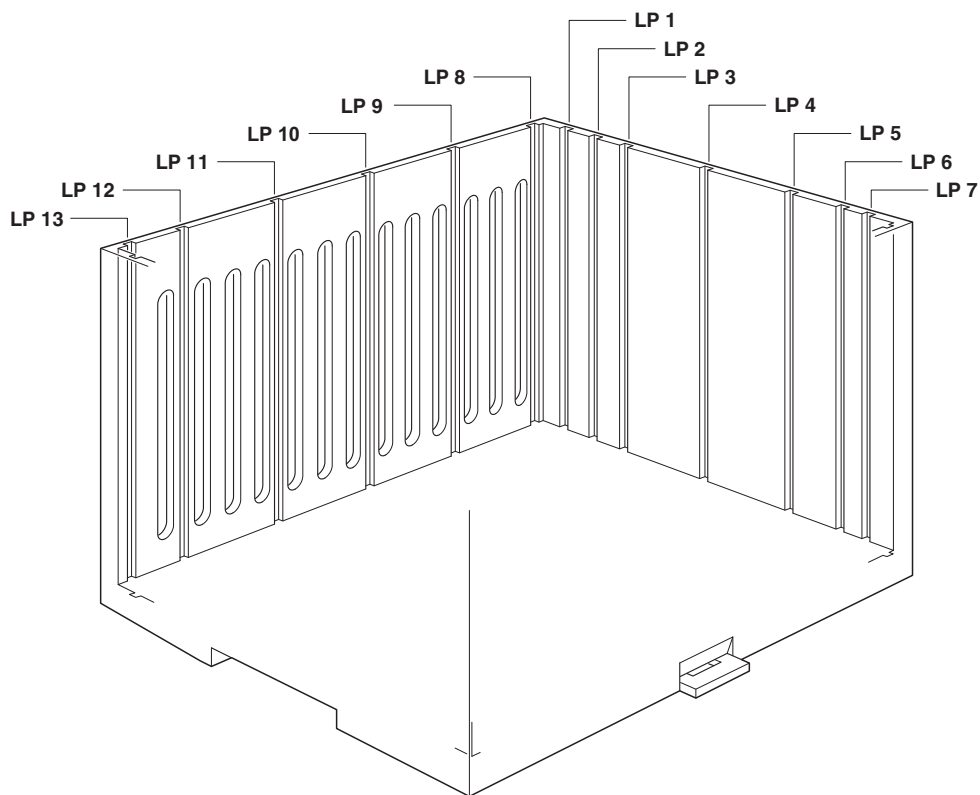
Dimensional drawing



PCB 1, 7: Dimension A: 122.5 mm; B: 124.8 mm; C: 0 mm
PCB 8, 13: Dimension A: 100.0 mm; B: 124.8 mm; C: 6.5 mm
PCB 9-12: Dimension A: 100.0 mm; B: 124.8 mm; C: 0 mm

PCB 1, 7: Dimension A: 122.5 mm; B: 124.8 mm; C: 0 mm
PCB 8, 13: Dimension A: 100.0 mm; B: 124.8 mm; C: 6.5 mm
PCB 9-12: Dimension A: 100.0 mm; B: 124.8 mm; C: 0 mm

Schematic diagram



Phoenix Contact 2016 © - all rights reserved
<http://www.phoenixcontact.com>

PHOENIX CONTACT GmbH & Co. KG
Flachmarktstr. 8
32825 Blomberg
Germany
Tel. +49 5235 300
Fax +49 5235 3 41200
<http://www.phoenixcontact.com>



Below is a list of articles with direct links to our shop Electric Automation Network where you can see:

- Quote per purchase volume in real time.
- Online documentation and datasheets of all products.
- Estimated delivery time enquiry in real time.
- Logistics systems for the shipment of materials almost anywhere in the world.
- Purchasing management, order record and tracking of shipments.

To access the product, [click on the green button.](#)

| Product | Code | Reference | Product link |
|---|---------|---------------------------------|----------------------------|
| Complete housing with vents, Cross connection: without bus connector, Color: black, Width: 125 mm, Constructional height: 138 mm, Number of positions cross connector: not relevant | 2941840 | CM125-LG/H 35/BO/DB/GH BK | Buy on EAN |