



**Automatización Eléctrica**  
Especialistas en Automatización

At the end of this document you will find links to products related to this catalog. You can go directly to our shop by clicking [HERE](#). [HERE](#)

## Active module - UM-32RM/KSR-G24/21/MS/PLC - 2900891

Please be informed that the data shown in this PDF Document is generated from our Online Catalog. Please find the complete data in the user's documentation. Our General Terms of Use for Downloads are valid (<http://phoenixcontact.com/download>)



VARIOFACE output module, with 32 miniature relays, 1 PDT with detectable manual operation each, plugged, for 24 V DC (incl. relay)

### Why buy this product

- Narrow design width of just 92 mm (8 channels) or 285 mm (32 channels)
- Plug-in miniature relays each with a PDT and detectable manual operation
- Supply voltage indicator (LED)
- LED status indicator and freewheeling diode per signal path (integrated in relay)



### Key Commercial Data

Packing unit	1 STK
GTIN	 4 046356 545105

### Technical data

#### Note

Utilization restriction	EMC: class A product, see manufacturer's declaration in the download area
-------------------------	---

#### Dimensions

Width	285 mm
Height	111 mm
Depth	64 mm

#### Ambient conditions

Ambient temperature (operation)	-20 °C ... 50 °C
Ambient temperature (storage/transport)	-20 °C ... 70 °C

#### Input data

Nominal input voltage $U_N$	24 V DC
Input voltage range in reference to $U_N$	0.9 ... 1.1 (observe derating)

# Active module - UM-32RM/KSR-G24/21/MS/PLC - 2900891

## Technical data

### Input data

Typical input current at $U_N$	18 mA
Typical response time	9 ms
Typical release time	6 ms
Type of protection	Free-wheeling diode (integrated in relay)
Operating voltage display	Green LED
Status display/channel	Yellow LED (integrated in relay)

### Output data

Contact type	Single contact, 1-PDT
Contact material	AgNi
Maximum switching voltage	250 V AC/DC
Minimum switching voltage	12 V AC/DC
Limiting continuous current	5 A
Min. switching current	10 mA
Interrupting rating (ohmic load) max.	120 W (24 V DC)
	62 W (48 V DC)
	48 W (60 V DC)
	55 W (110 V DC)
	66 W (220 V DC)
	1250 VA (250 V AC)

### General

No. of channels	32
With components	Yes
Mechanical service life	$5 \times 10^6$ cycles
Operating mode	100% operating factor
Degree of protection	IP00
Mounting position	any
Assembly instructions	In rows with zero spacing
Color	green
Designation	Air and creepage distances, output/output
Standards/regulations	DIN EN 50178
	IEC 60664
	IEC 62103
Rated insulation voltage	260 V AC
Rated surge voltage	4 kV (Basic insulation between output contact current paths)
	6 kV (Safe isolation and reinforced insulation between input circuit and output contact paths)
Degree of pollution	2
Overvoltage category	III

### Connection data for connection 1

## Active module - UM-32RM/KSR-G24/21/MS/PLC - 2900891

### Technical data

#### Connection data for connection 1

Connection name	Controller level
Connection method	IDC/FLK pin strip (2.54 mm)
Number of connections	1
Number of positions	50

#### Connection data for connection 2

Connection name	Field level
Connection method	Screw connection
Stripping length	8 mm
Screw thread	M3
Conductor cross section solid	0.2 mm <sup>2</sup> ... 4 mm <sup>2</sup>
Conductor cross section flexible	0.2 mm <sup>2</sup> ... 2.5 mm <sup>2</sup>
Conductor cross section AWG	24 ... 12

#### Connection data for connection 3

Connection name	Supply
Connection method	Screw connection
Stripping length	8 mm
Screw thread	M3
Conductor cross section solid	0.2 mm <sup>2</sup> ... 4 mm <sup>2</sup>
Conductor cross section flexible	0.2 mm <sup>2</sup> ... 2.5 mm <sup>2</sup>
Conductor cross section AWG	24 ... 12
Number of connections	4

#### Supported controller

Corresponding control	MITSUBISHI MELSEC Q
Corresponding I/O card	QY82P
Corresponding control	MITSUBISHI MELSEC L
Corresponding I/O card	LY41PT1P
	LY42PT1P

#### Standards and Regulations

Designation	Air and creepage distances, output/output
Standards/regulations	DIN EN 50178
	IEC 60664
	IEC 62103
Degree of pollution	2
Overvoltage category	III

#### Classifications

eCl@ss

eCl@ss 4.0	27371102
------------	----------

# Active module - UM-32RM/KSR-G24/21/MS/PLC - 2900891

## Classifications

### eCl@ss

eCl@ss 4.1	27371102
eCl@ss 5.0	27371001
eCl@ss 5.1	27371001
eCl@ss 6.0	27371001
eCl@ss 7.0	27371001
eCl@ss 8.0	27371601
eCl@ss 9.0	27371601

### ETIM

ETIM 2.0	EC001437
ETIM 3.0	EC001437
ETIM 4.0	EC001437
ETIM 5.0	EC001437

### UNSPSC

UNSPSC 6.01	30211916
UNSPSC 7.0901	39121515
UNSPSC 11	39121515
UNSPSC 12.01	39121515
UNSPSC 13.2	39121515

## Approvals

### Approvals

---

#### Approvals

EAC

---

#### Ex Approvals

---

#### Approvals submitted

---

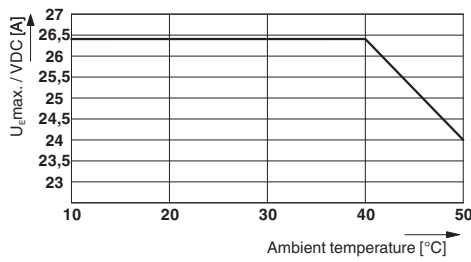
### Approval details

EAC
-----

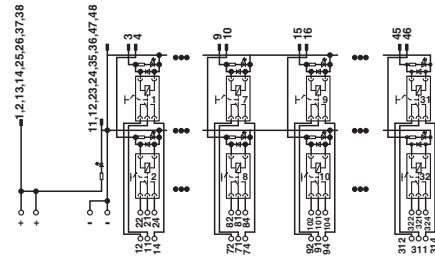
## Drawings

# Active module - UM-32RM/KSR-G24/21/MS/PLC - 2900891

Diagram



Circuit diagram



Derating curve for input voltage

Phoenix Contact 2016 © - all rights reserved  
<http://www.phoenixcontact.com>

PHOENIX CONTACT GmbH & Co. KG  
Flachsmarktstr. 8  
32825 Blomberg  
Germany  
Tel. +49 5235 300  
Fax +49 5235 3 41200  
<http://www.phoenixcontact.com>

Below is a list of articles with direct links to our shop Electric Automation Network where you can see:

- Quote per purchase volume in real time.
- Online documentation and datasheets of all products.
- Estimated delivery time enquiry in real time.
- Logistics systems for the shipment of materials almost anywhere in the world.
- Purchasing management, order record and tracking of shipments.

To access the product, [click on the green button.](#)

<b>Product</b>	<b>Code</b>	<b>Reference</b>	<b>Product link</b>
VARIOFACE output module, with 32 miniature relays, 1 PDT with detectable manual operation each, plugged, for 24 V DC (incl. relay)	2900891	UM-32RM/KSR-G24/21/MS/PLC	<a href="#">Buy on EAN</a>