



Automatización Eléctrica
Especialistas en Automatización

At the end of this document you will find links to products related to this catalog. You can go directly to our shop by clicking [HERE](#). [HERE](#)

EMC filter - NEF 1- 6 - 2783082

Please be informed that the data shown in this PDF Document is generated from our Online Catalog. Please find the complete data in the user's documentation. Our General Terms of Use for Downloads are valid (<http://phoenixcontact.com/download>)




Mains interference filter, with universal foot for mounting on NS 32 and NS 35/7.5, nominal current: 6 A

Why buy this product

- For single-phase circuits
- DIN rail module



Key Commercial Data

Packing unit	5 STK
GTIN	 4 017918 069803

Technical data

Dimensions

Height	79.4 mm
Width	40 mm
Depth	84.1 mm

Ambient conditions

Degree of protection	IP20
Ambient temperature (operation)	-25 °C ... 100 °C (HMF)

General

Housing material	PA
Flammability rating according to UL 94	V2
Color	black
Standards for clearances and creepage distances	IEC 60664-1
	VDE 0110-1
Type	Rail-mountable module, one-piece
Mounting type	DIN rail: 35 mm
Number of positions	2

EMC filter - NEF 1- 6 - 2783082

Technical data

General

Direction of action	1L-N & N-PE
---------------------	-------------

Protective circuit

Nominal voltage U_N	240 V AC
Max. operating voltage U_{max}	264 V AC
Arrester rated voltage U_C (L-N)	264 V AC
Arrester rated voltage U_C (L-PE)	250 V AC
Nominal frequency f_N	50 Hz
	60 Hz
Nominal current I_N	6 A (40°C)
Operating effective current I_C at U_C	≤ 0.25 mA
Residual current I_{PE}	≤ 0.5 mA
Inductivity in series	2x 2.7 mH (in acc. with VDE 0565-2 with current compensation)
Capacity (L-N)	2x 470 nF (X2)
Capacity (L-PE)	2x 2.2 nF (Y2)
Max. required back-up fuse	6.3 A (gL/C)
Input attenuation aE, sym.	> 80 dB (50 Ω / 1 MHz)
Input attenuation aE, asym.	> 40 dB (50 Ω / 1 MHz)
Surge protection fault message	None

Non-heating apparatus connection, power supply

Connection method	Screw connection
Connection type IN	Screw terminal blocks
Connection type OUT	Screw terminal blocks
Screw thread	M3
Tightening torque	0.8 Nm
Stripping length	8 mm
Conductor cross section flexible min.	0.2 mm ²
Conductor cross section flexible max.	2.5 mm ²
Conductor cross section solid min.	0.2 mm ²
Conductor cross section solid max.	4 mm ²
Conductor cross section AWG min.	24
Conductor cross section AWG max.	12

Standards and Regulations

Standards/regulations	IEC 60939-2
	DIN EN 60939-2

Protective circuit, filter

Discharge resistor	1 M Ω
--------------------	--------------

EMC filter - NEF 1- 6 - 2783082

Classifications

eCl@ss

eCl@ss 4.0	27140201
eCl@ss 4.1	27130801
eCl@ss 5.0	27130801
eCl@ss 5.1	27130801
eCl@ss 6.0	27130806
eCl@ss 7.0	27130806
eCl@ss 8.0	27130806
eCl@ss 9.0	27130806

ETIM

ETIM 2.0	EC000942
ETIM 3.0	EC000942
ETIM 4.0	EC000942
ETIM 5.0	EC000942

UNSPSC

UNSPSC 6.01	30212010
UNSPSC 7.0901	39121610
UNSPSC 11	39121610
UNSPSC 12.01	39121610
UNSPSC 13.2	39121620

Approvals

Approvals

Approvals

VDE Zeichengenehmigung / GL / GL-SW / EAC / EAC / GL

Ex Approvals

Approvals submitted

Approval details

EMC filter - NEF 1- 6 - 2783082

Approvals

VDE Zeichengenehmigung	
mm ² /AWG/kcmil	2.5
Nominal current I _N	6 A
Nominal voltage U _N	250 V

GL

GL-SW

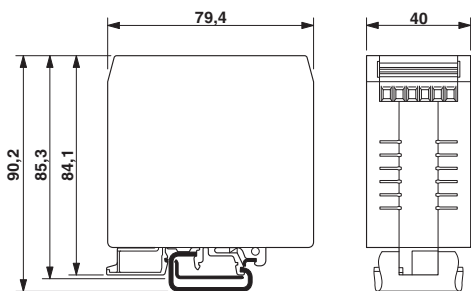
EAC

EAC

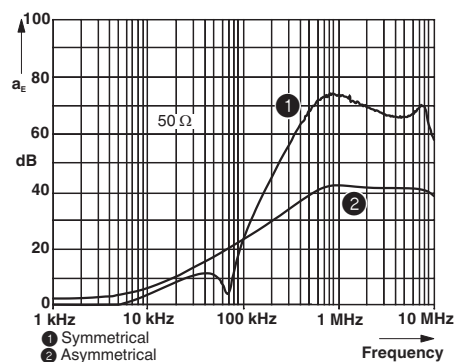
GL

Drawings

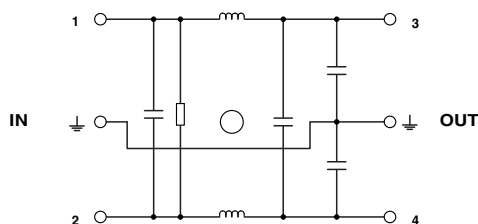
Dimensional drawing



Diagram



Circuit diagram



Phoenix Contact 2016 © - all rights reserved
<http://www.phoenixcontact.com>

PHOENIX CONTACT GmbH & Co. KG
Flachsmarktstr. 8
32825 Blomberg
Germany
Tel. +49 5235 300
Fax +49 5235 3 41200
<http://www.phoenixcontact.com>



Below is a list of articles with direct links to our shop Electric Automation Network where you can see:

- Quote per purchase volume in real time.
- Online documentation and datasheets of all products.
- Estimated delivery time enquiry in real time.
- Logistics systems for the shipment of materials almost anywhere in the world.
- Purchasing management, order record and tracking of shipments.

To access the product, [click on the green button.](#)

Product	Code	Reference	Product link
Mains interference filter, with universal foot for mounting on NS 32 and NS 35/7.5, nominal current: 6 A	2783082	NEF 1- 6	Buy on EAN