



Automatización Eléctrica
Especialistas en Automatización

At the end of this document you will find links to products related to this catalog. You can go directly to our shop by clicking [HERE](#). [HERE](#)

Flush-type connector - SACC-DSI-M5MS-3CON-L180 - 1530621

Please be informed that the data shown in this PDF Document is generated from our Online Catalog. Please find the complete data in the user's documentation. Our General Terms of Use for Downloads are valid (<http://phoenixcontact.com/download>)




Sensor/actuator flush-type plug, 3-pos., M5, prewall/screw mounting, with straight solder connection

Product Description

Rear mounting, one-piece, for wave soldering processes, 180°

Key Commercial Data

Packing unit	20 STK
GTIN	 4 046356 024426

Technical data

Ambient conditions

Ambient temperature (operation)	-25 °C ... 80 °C
Degree of protection	IP67

General

Rated current at 40°C	1 A
Rated voltage	60 V
Number of positions	3
Insulation resistance	≥ 100 MΩ
Coding	A - standard
Standards/regulations	M5 connector IEC 61076-2-105
Status display	No
Overvoltage category	II
Degree of pollution	3
Test voltage	800 V
Connection method	Solder pins
Mounting type	Rear mounting M5 x 0.5 With locking nut

Material

Flammability rating according to UL 94	HB
Contact material	Cu alloy
Contact surface material	Au

Flush-type connector - SACC-DSI-M5MS-3CON-L180 - 1530621

Technical data

Material

Contact carrier material	PA 66
Material, knurts	Nickel-plated brass
Sealing material	Viton

Standards and Regulations

Standard designation	M5 connector
Standards/regulations	IEC 61076-2-105
Flammability rating according to UL 94	HB

Classifications

eCl@ss

eCl@ss 4.0	27140815
eCl@ss 4.1	27140815
eCl@ss 5.0	27143423
eCl@ss 5.1	27143423
eCl@ss 6.0	27143423
eCl@ss 7.0	27449001
eCl@ss 8.0	27440103

ETIM

ETIM 2.0	EC001297
ETIM 3.0	EC002061
ETIM 4.0	EC002062
ETIM 5.0	EC002061

UNSPSC

UNSPSC 6.01	31251501
UNSPSC 7.0901	31251501
UNSPSC 11	31251501
UNSPSC 12.01	31251501
UNSPSC 13.2	31251501

Approvals

Approvals

Approvals

EAC

Ex Approvals

Flush-type connector - SACC-DSI-M5MS-3CON-L180 - 1530621

Approvals

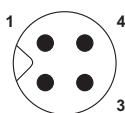
Approvals submitted

Approval details

EAC

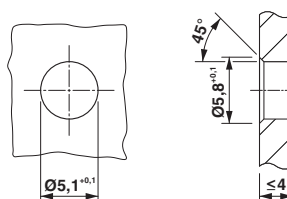
Drawings

Schematic diagram

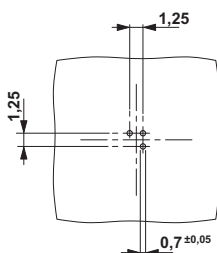


Pin assignment M5 plug, 3-pos., view male side

Dimensional drawing

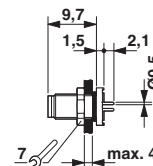


Drilling diagram



M5 flush-type plug

Dimensional drawing



M5 flush-type plug



Below is a list of articles with direct links to our shop Electric Automation Network where you can see:

- Quote per purchase volume in real time.
- Online documentation and datasheets of all products.
- Estimated delivery time enquiry in real time.
- Logistics systems for the shipment of materials almost anywhere in the world.
- Purchasing management, order record and tracking of shipments.

To access the product, [click on the green button.](#)

Product	Code	Reference	Product link
Sensor/actuator flush-type plug, 3-pos., M5, prewall/screw mounting, with straight solder connection	1530621	SACC-DSI-M5MS-3CON-L180	Buy on EAN