

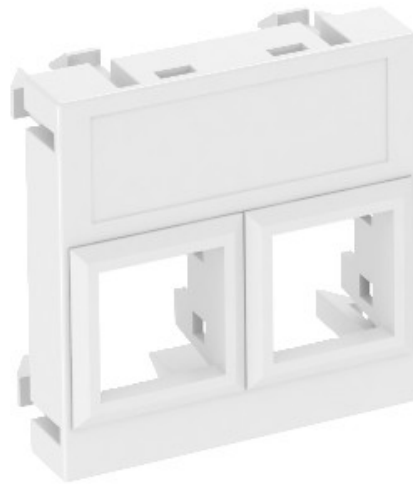


Electric Automation
Automation specialists

Reference: DTG-02LE RW1
Code: 6119304

Data technology support f.2 connection modules type LE, 45x45mm, Pure white, 9010, Polycarbonate, PC

Buy it at [Electric Automation Network](#)



Data technology support with straight outlet and without a locking slider to accept two data technology connection modules with RJ45 socket. The locking fastening is suitable for horizontal and vertical installation in the system environment. Type I has a special module seat and is designed for indirect fastening of the data connection modules in the mounting opening.