



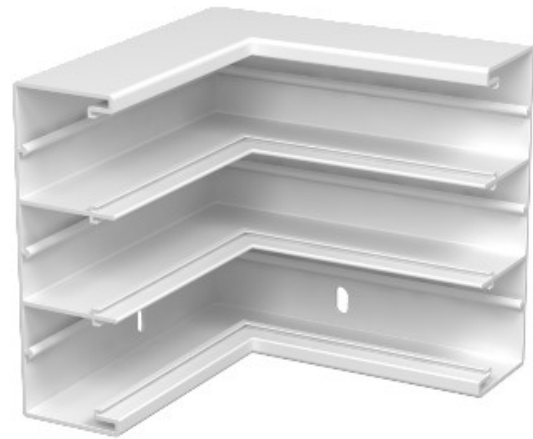
Electric Automation
Automation specialists

Reference: GEK-KIS53160-3

Code: 6116203

Internal corner rigid form, 53x160mm,
Pure white, 9010, Polyvinylchloride, PVC

[Buy it at Electric Automation Network](#)



Rigid 90° internal corner for changing the direction of the Rapid 45 three-compartment device installation trunking.