



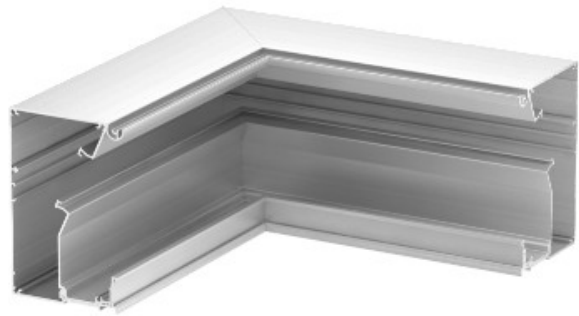
**Electric Automation**  
Automation specialists

Reference: GAD IEL

Code: 6115795

Internal corner, Design duct without cover, Anodised, Aluminium, Alu

Buy it at [Electric Automation Network](#)



Internal corner base to create a design device installation trunking of the GAD series. 45 mm system opening for acceptance of Modul 45 switch and connection devices and the appropriate PVC and aluminium covers of the Rapid 45 series. The fitting can be completed with fitting covers in the "Swing", "Soft" or "Style" design. The GAD OTA cover adapters are essential. GAD OTD spacer must be placed between the trunking covers.