

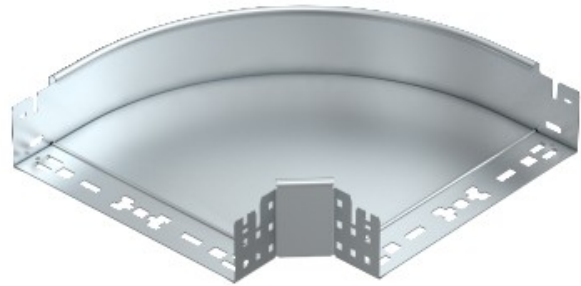


Electric Automation
Automation specialists

Reference: RBM 90 830 FT
Code: 6041514

90° bend with quick connector, 85x300,
Hot-dip galvanised, DIN EN ISO 1461,
Steel, St

Buy it at [Electric Automation Network](#)



90° bend with quick connector system. For all cable tray types of 85 mm side height.