

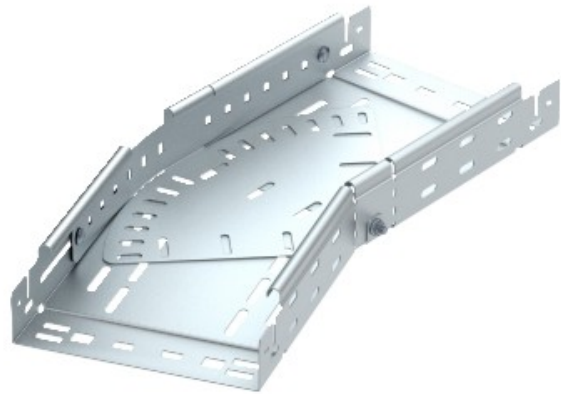


Electric Automation
Automation specialists

Reference: RBMV 620 FS
Code: 6040484

Variable bend with quick connector,
60x200, Strip-galvanised, DIN EN 10147,
Steel, St

Buy it at [Electric Automation Network](#)



Magic bend 0°-90°, variable, with quick connector system. For all cable tray types of 60 mm side height.