

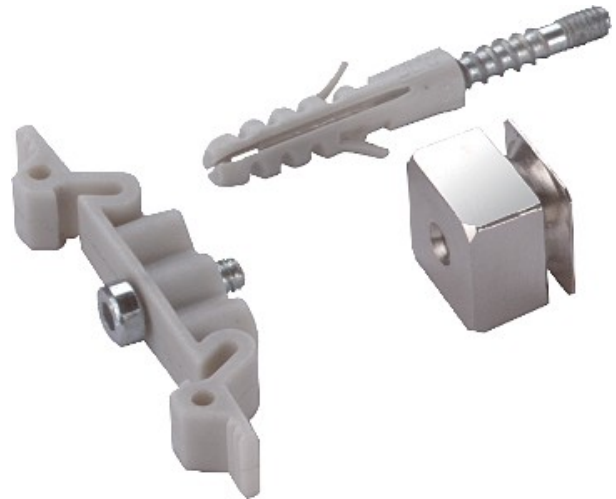


Electric Automation
Automation specialists

Reference: DLS-BS
Code: 5082382

Fixing kit for protective devices,

[Buy it at Electric Automation Network](#)



DLS-BS: The attachment set is designed for DIN profile rail and wall mounting and can be used for the data cable protection devices listed below:

- Coax B-E2/...
- RJ 11-Tele/4...
- RJ 45 S-...