



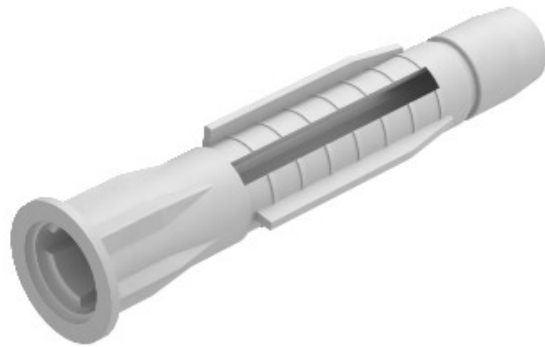
**Electric Automation**  
Automation specialists

Reference: 910 MZ 5x30

Code: 2347523

Multi-purpose plug , 5x30mm, Grey-white, 9002, Polyamide, PA

Buy it at [Electric Automation Network](#)



Also suitable as a cavity anchor, with collars to prevent slipping. 3 tabs take up the torque.

Required minimum bolt length = anchor length + component thickness + 1 x bolt  $\varnothing$ .  
Withdrawal force applies to wood screws of the largest bolt diameter in concrete of class B25.

Our safety value recommendation: 5x